

NOTICE OF PUBLIC INFORMATION CENTRE

MUNICIPAL CLASS ENVIRONMENTAL ASSESSMENT STUDY

Beverley Acres German Mills Creek Erosion Control

Toronto and Region Conservation Authority (TRCA), in partnership with the Regional Municipality of York, has initiated a Municipal Class Environmental Assessment (MCEA) to identify an erosion control solution for sanitary infrastructure protection. The study area includes municipal lands and easements along German Mills Creek, between Major Mackenzie Drive East and Palmer Avenue, in City of Richmond Hill.

Visit the **Virtual Public Open House** to take a self-guided review of the project and submit feedback. Please join us for an in-person Public Information Centre that includes a presentation and Q&A with the project team:

Monday, April 22nd, 2024

6:00 PM to 8:00 PM

Bayview Hill Community Centre & Pool

Program Room

114 Spadina Rd

Richmond Hill, ON L4B 2Y9

To register for the event and access the open house via our Project website, scan the QR code below.



Comments can be provided in-person at the live event on April 22, online through the Virtual Open House, or through the email address below. Comments must be provided on or before May 10th, 2024.

If you are interested in participating in this study or receiving future project updates, please contact the Project Manager by one of the methods below:

Philip Wolfrain

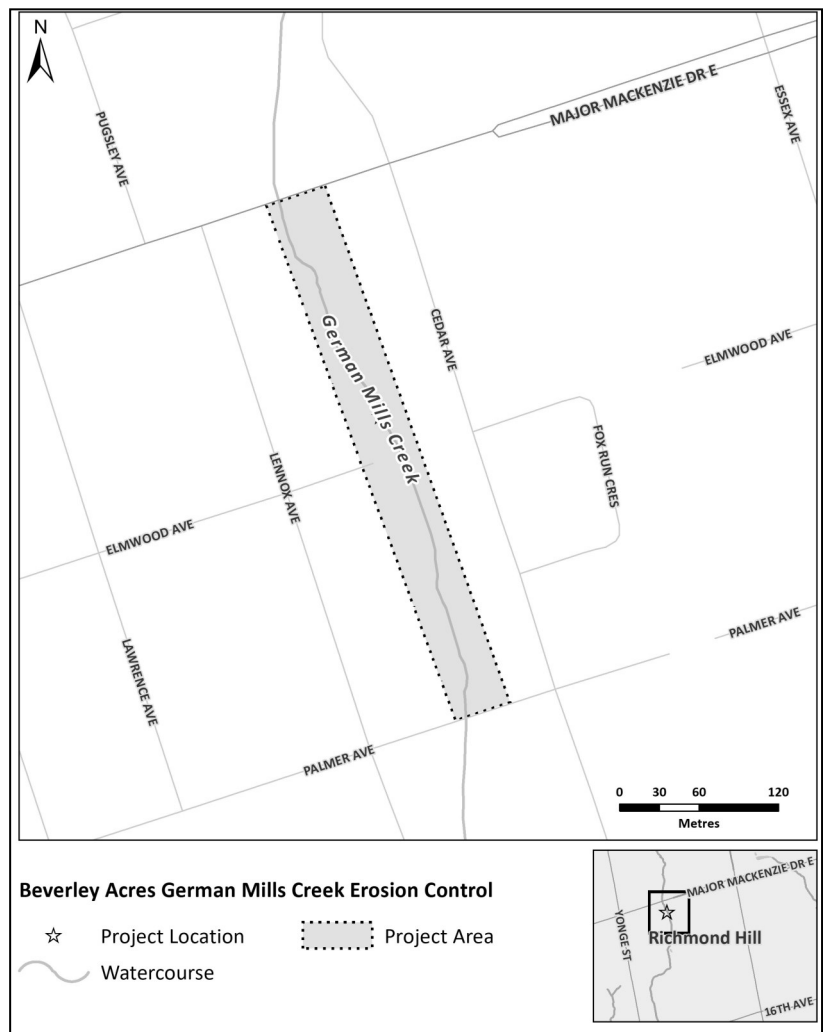
Toronto and Region Conservation Authority

Phone: (365) 566-2383

Email: phil.wolfrain@trca.ca

Website: trca.ca/beverley-acres

Publication date: March 2024



Information will be collected in accordance with the Municipal Freedom of Information and Protection of Privacy Act. With the exception of personal information, all comments will become part of the public record.

