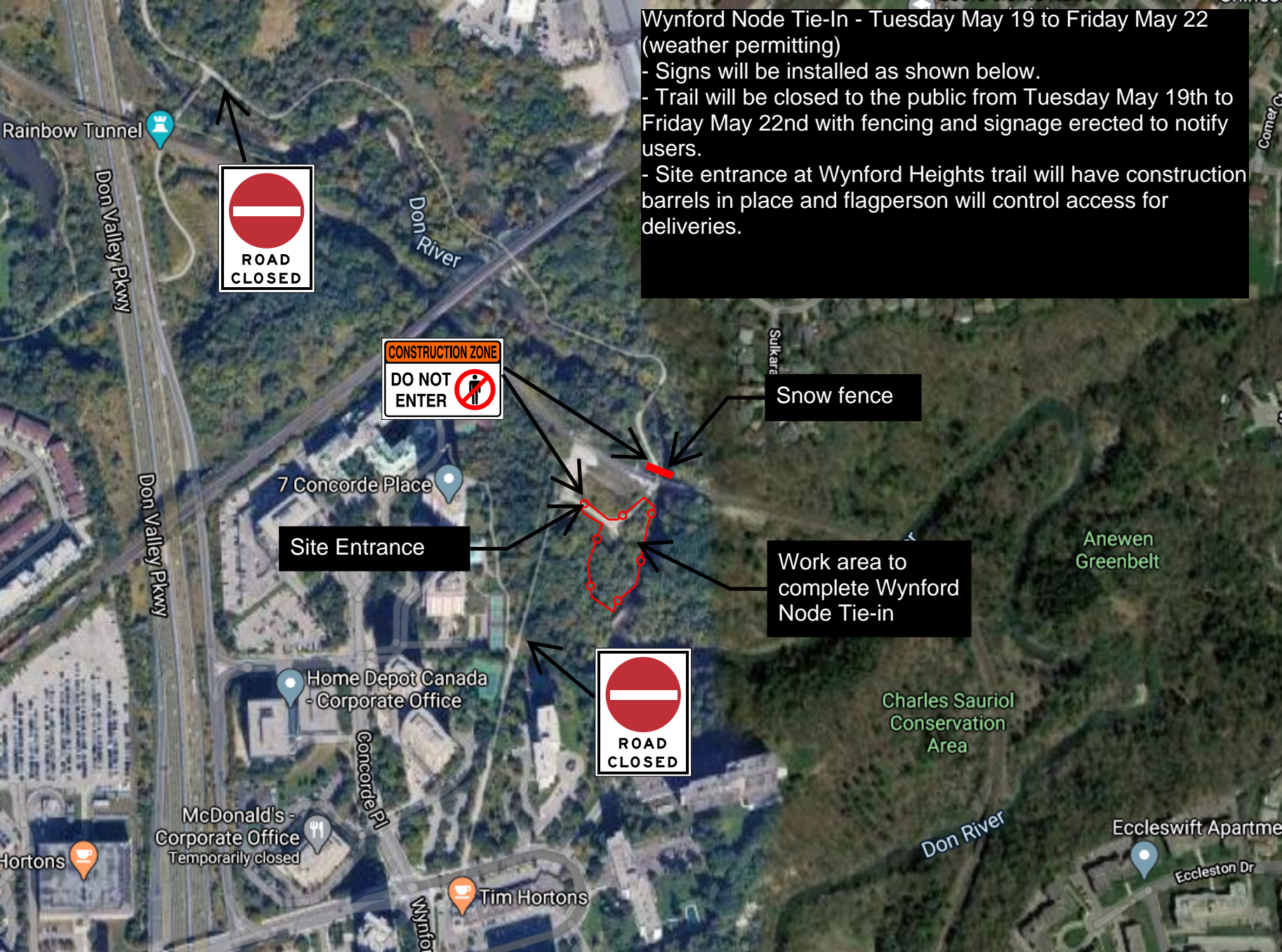


Wynford Node Tie-In - Tuesday May 19 to Friday May 22 (weather permitting)

- Signs will be installed as shown below.
- Trail will be closed to the public from Tuesday May 19th to Friday May 22nd with fencing and signage erected to notify users.
- Site entrance at Wynford Heights trail will have construction barrels in place and flagperson will control access for deliveries.



Site Entrance

Snow fence

Work area to complete Wynford Node Tie-in

Rainbow Tunnel

Don Valley Pkwy

Don River

7 Concorde Place

Don Valley Pkwy

Home Depot Canada - Corporate Office

Concorde Pl

McDonald's - Corporate Office Temporarily closed

Tim Hortons

Wynford

Charles Sauriol Conservation Area

Anewen Greenbelt

Don River

Eccleswift Apartments

Eccleston Dr