

EAST DON TRAIL ENVIRONMENTAL ASSESSMENT

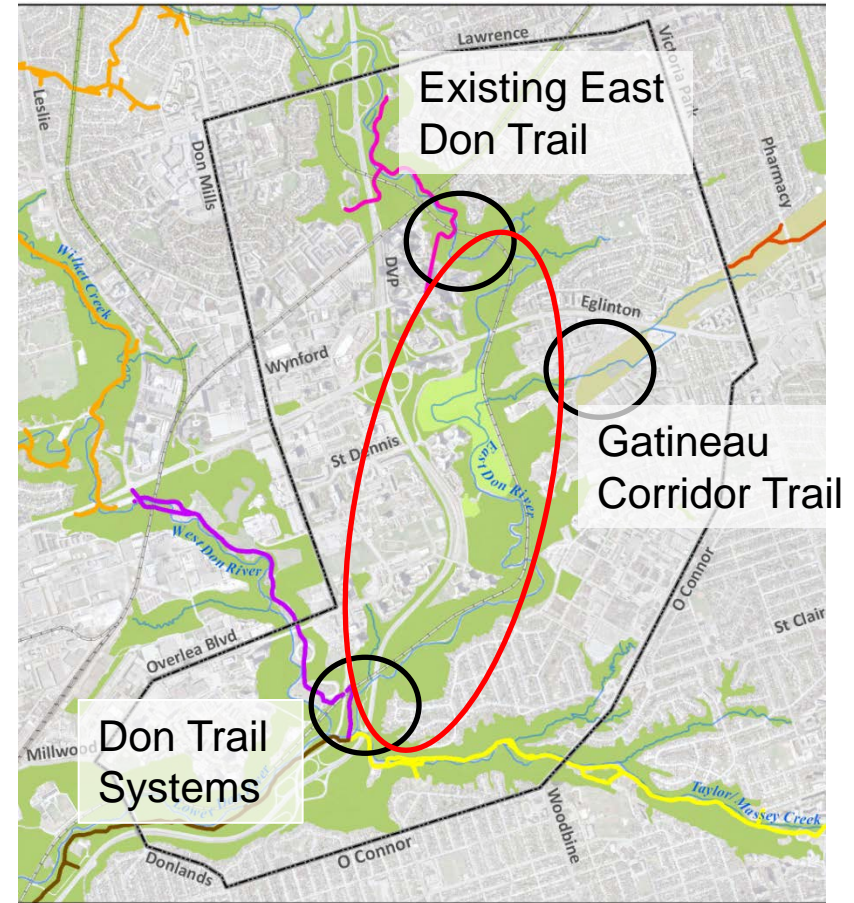
Public Meeting #2/3
September 12, 2013
5:30 to 8:30 pm
The Estonian House



Alternative Trail Alignments

Alternative Trail Alignments are different trail route options for providing a multi-use trail connection in the East Don Corridor

The Alternative Trail Alignments will be evaluated to select a preferred route



Areas

Area 1

2 trail alignment options:

- Forest Trail A
- Forest Trail B

Area 2

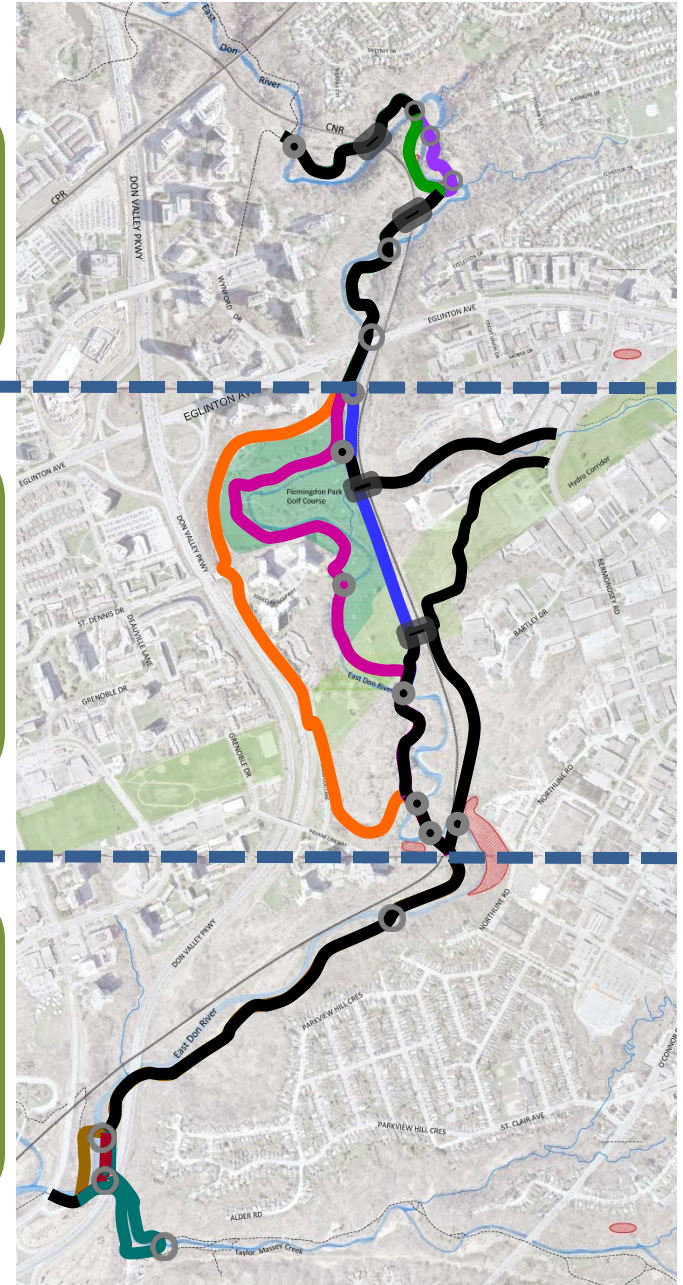
9 trail alignment options:

- | | | |
|---------------|----------------|----------------|
| • Road Link A | • River Walk A | • Rail Trail A |
| • Road Link B | • River Walk B | • Rail Trail B |
| • Road Link C | • River Walk C | • Rail Trail C |

Area 3

3 trail alignment options:

- Access Route A
- Access Route B
- Access Route C



Areas

Area 1

2 trail alignment options:

- Forest Trail A
- Forest Trail B

Area 2

9 trail alignment options:

- Road Link A
- Road Link B
- Road Link C

Area 3

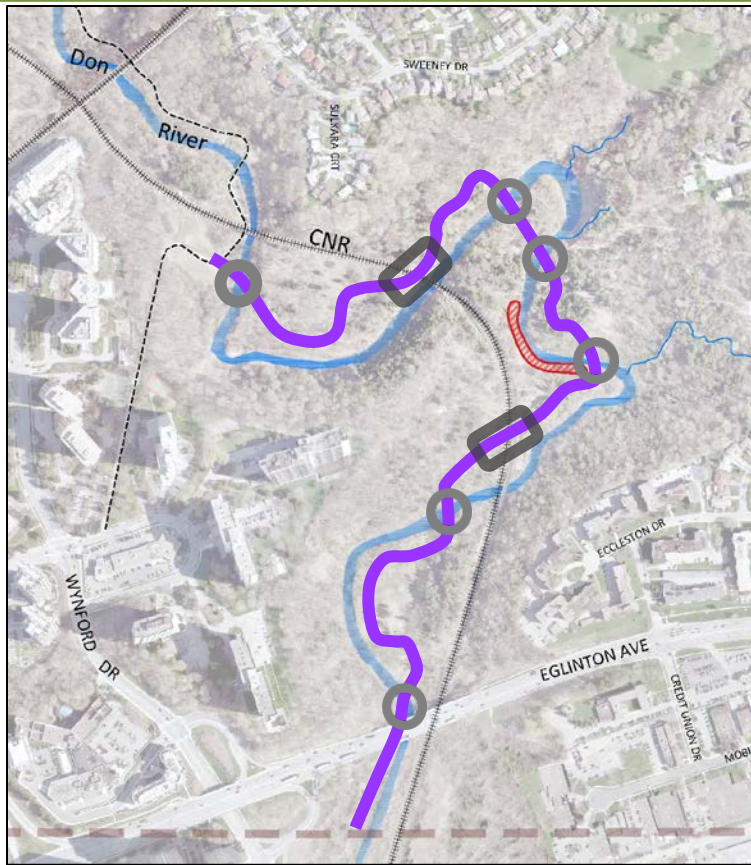
3 trail alignment options:

- Access Route A
- Access Route B
- Access Route C

Once public and agency input has been incorporated into the draft evaluation of these alignments a preferred route will be selected within each area



Area 1: Forest Trail A and B



Forest Trail A

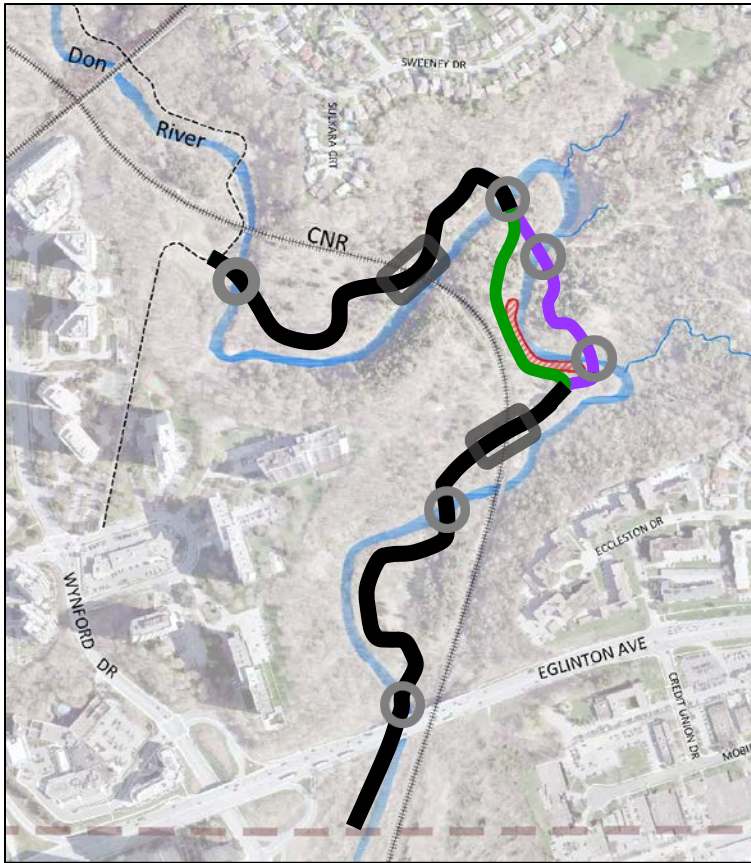
- ~1.6km
- 6 bridges, 2 rail line crossing



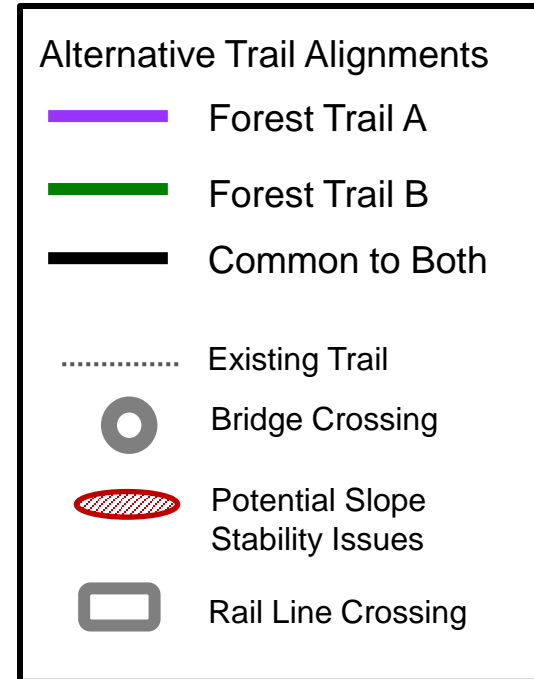
Forest Trail B

- ~1.6km
- 4 bridges, 2 rail line crossing

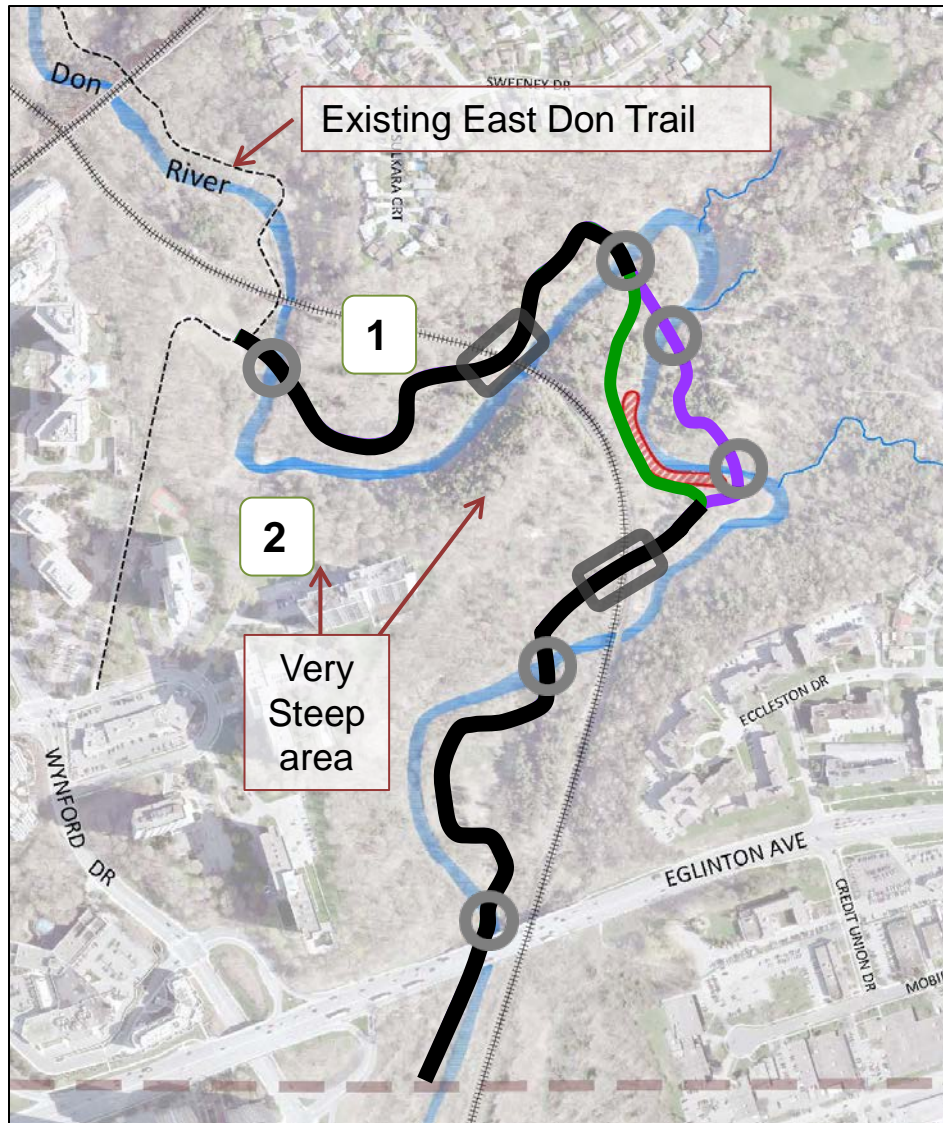
Area 1: Forest Trail A and B



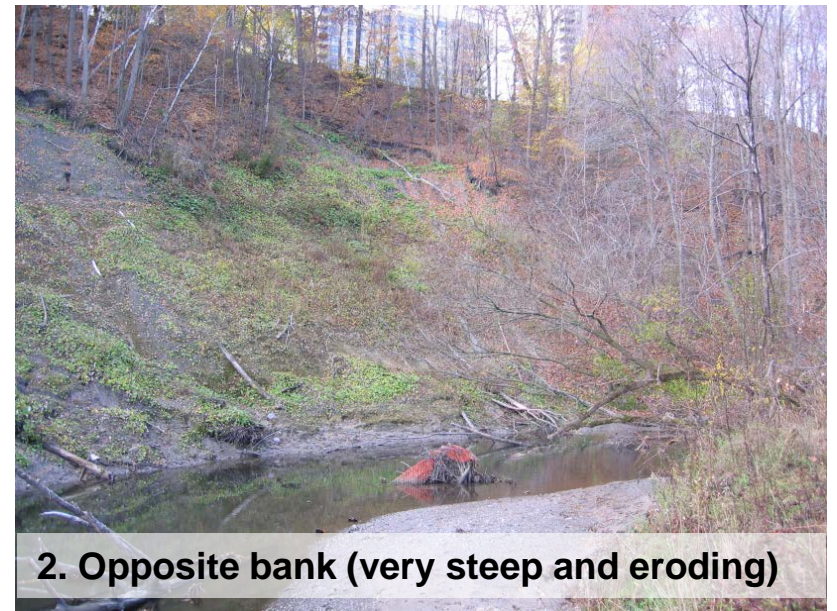
Forest Trail A and B



Area 1: Forest Trail A and B

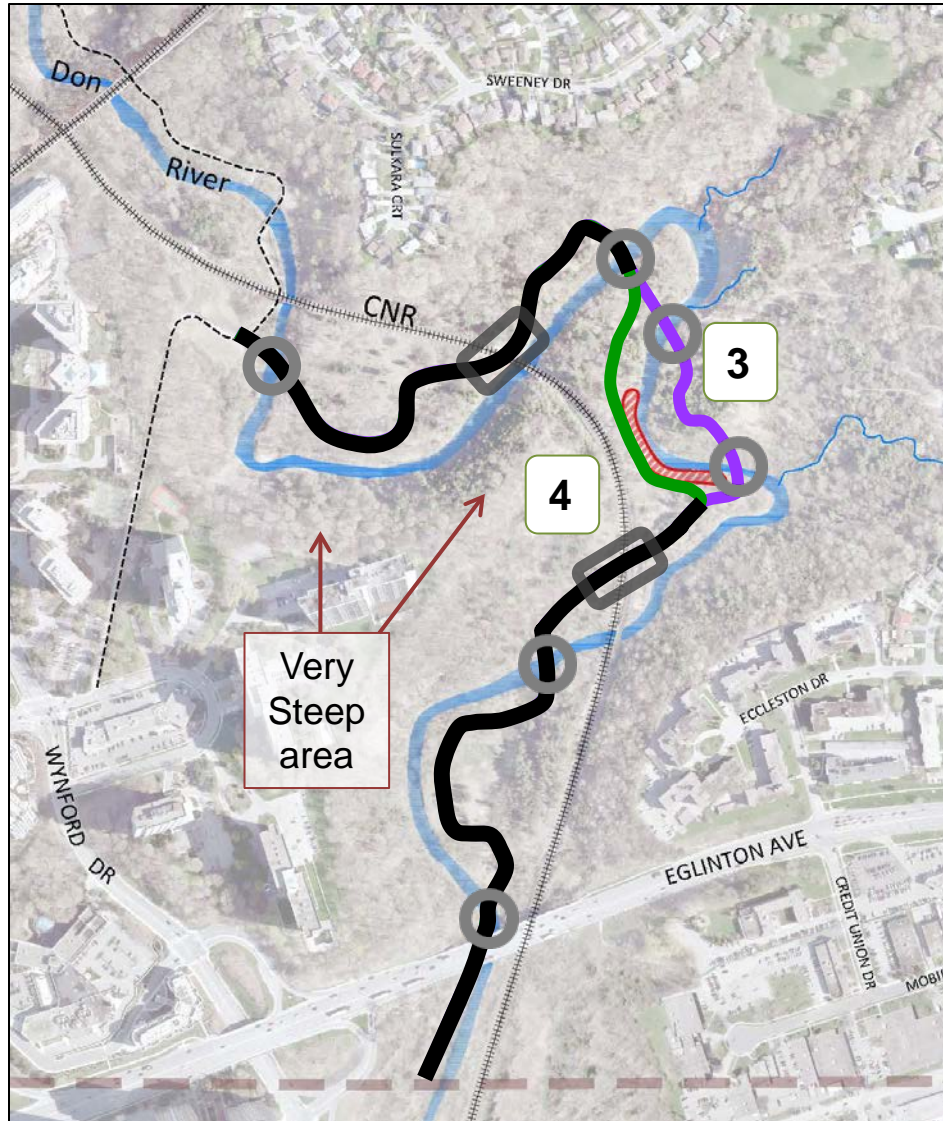


1. Potential location of trail (flat)

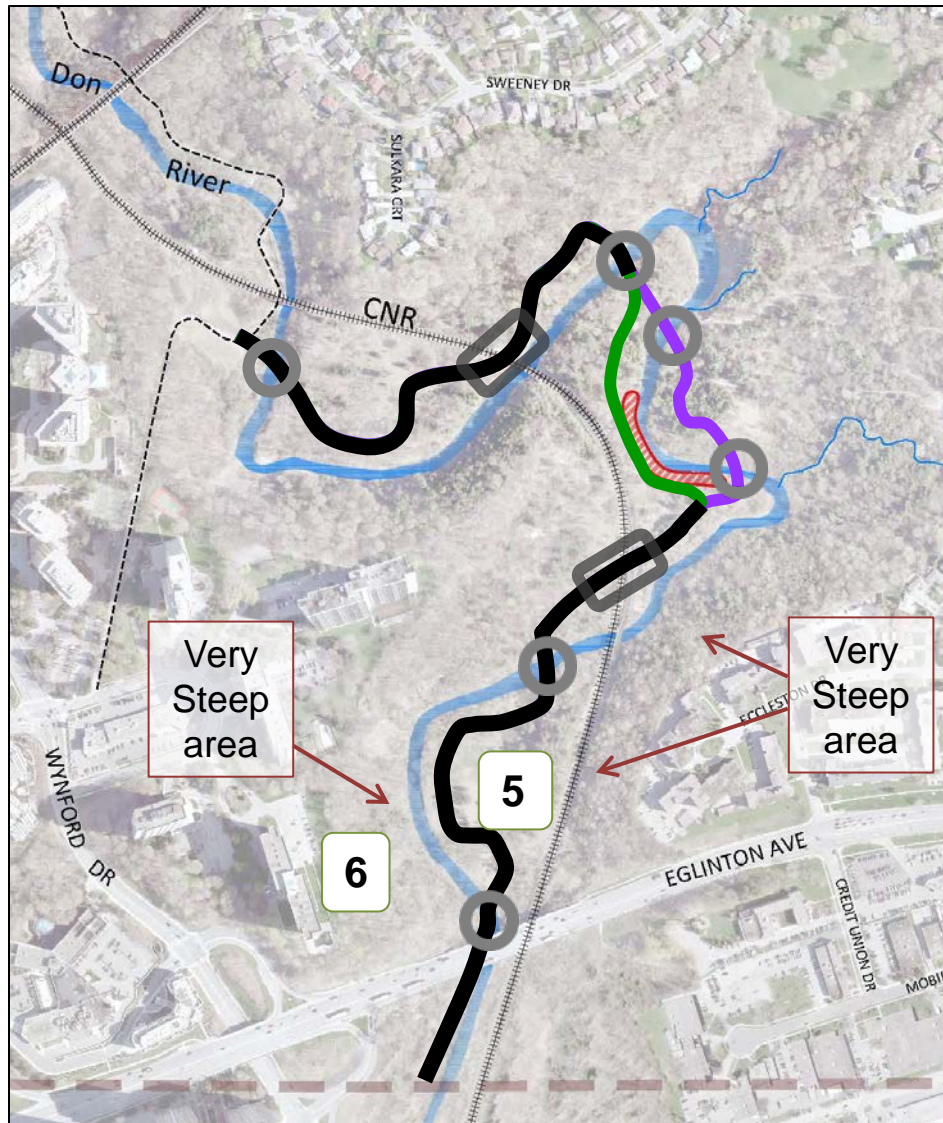


2. Opposite bank (very steep and eroding)

Area 1: Forest Trail A and B



Area 1: Forest Trail A and B

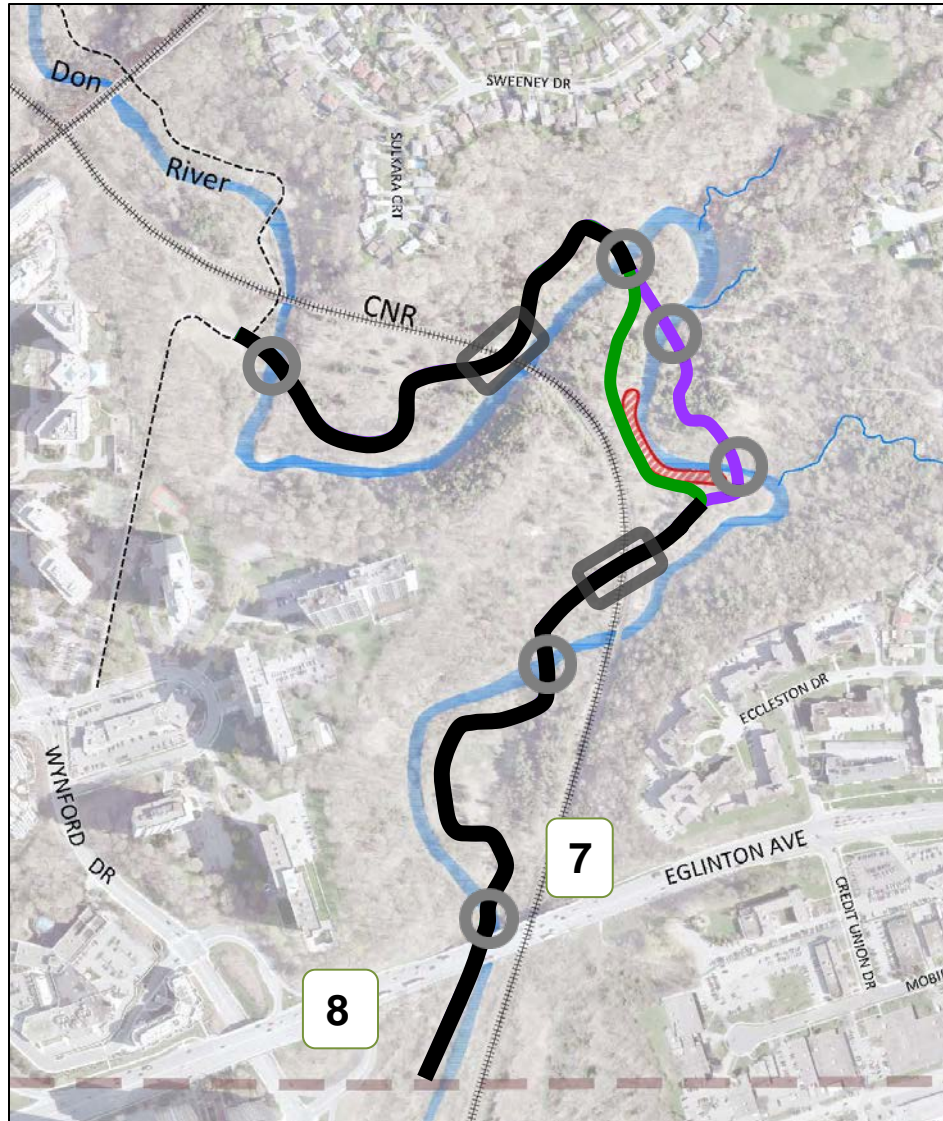


5. Potential trail location (flat)



6. Opposite bank (steep)

Area 1: Forest Trail A and B

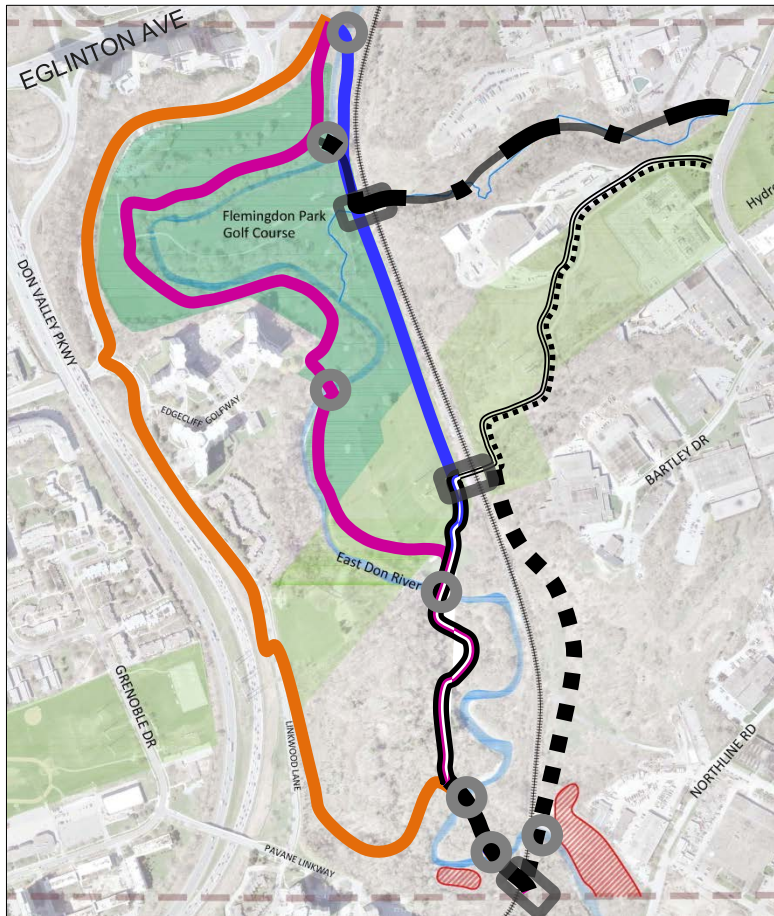



7. Potential river crossing



8. Potential trail location, west of river

Area 2: Alternative Trail Alignments






-  Bridge Crossing
-  Rail Line Crossing
-  Potential Slope Stability Issues

9 different Trail Alignments
This is a combination of:

- 3 routes traveling north-south
-  Road Link
 -  River Walk
 -  Rail Trail

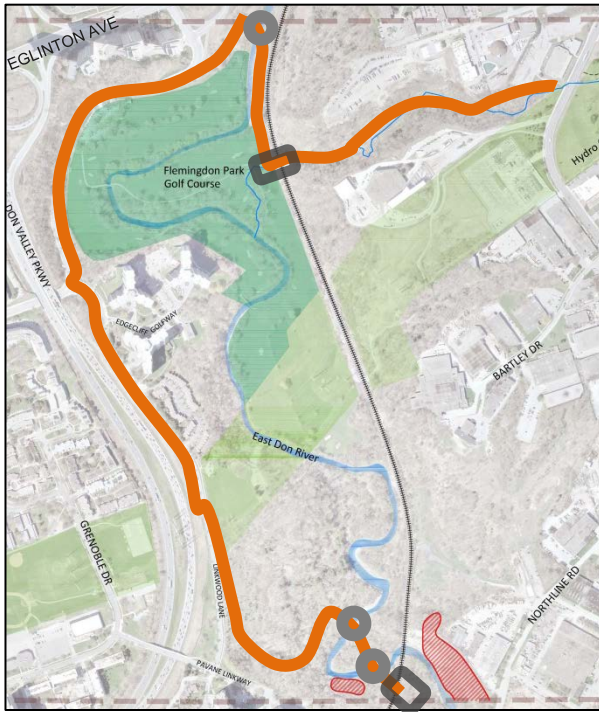
+

- 3 routes traveling east-west
(connects with Gatineau)
-  A
 -  B
 -  C

=

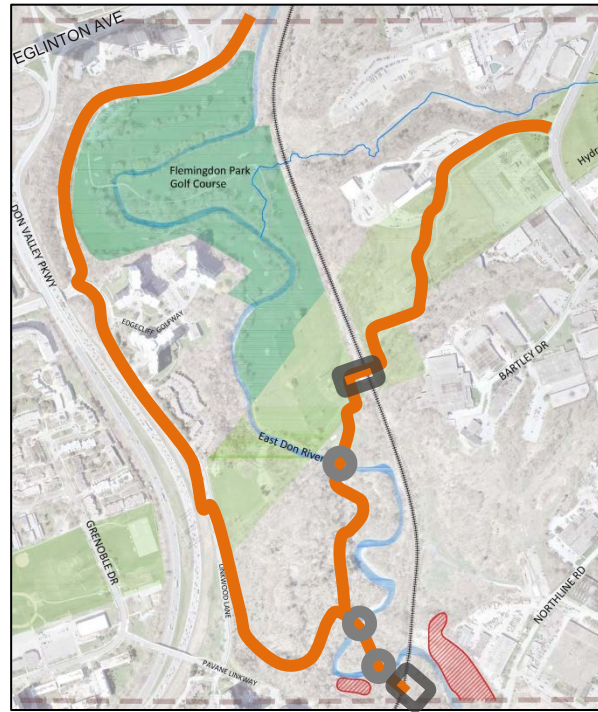
Road Link A	River Walk A	Rail Trail A
Road Link B	River Walk B	Rail Trail B
Road Link C	River Walk C	Rail Trail C

Area 2: Road Link A, B & C



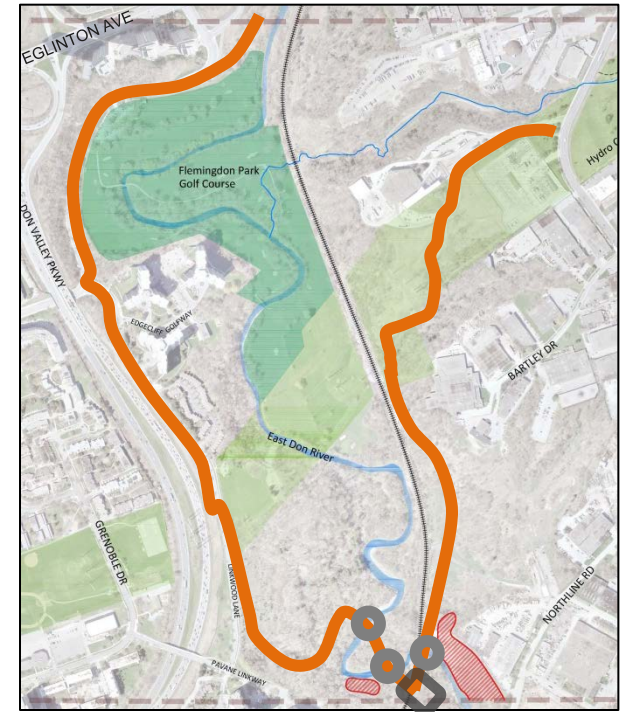
Road Link A

- ~2.9km
- 3 bridges
- 2 rail line crossing



Road Link B

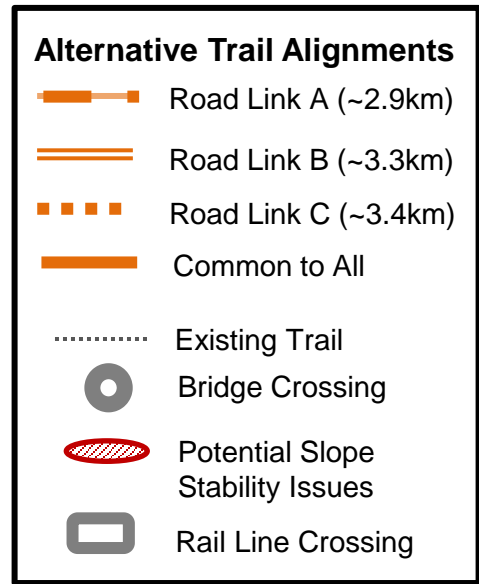
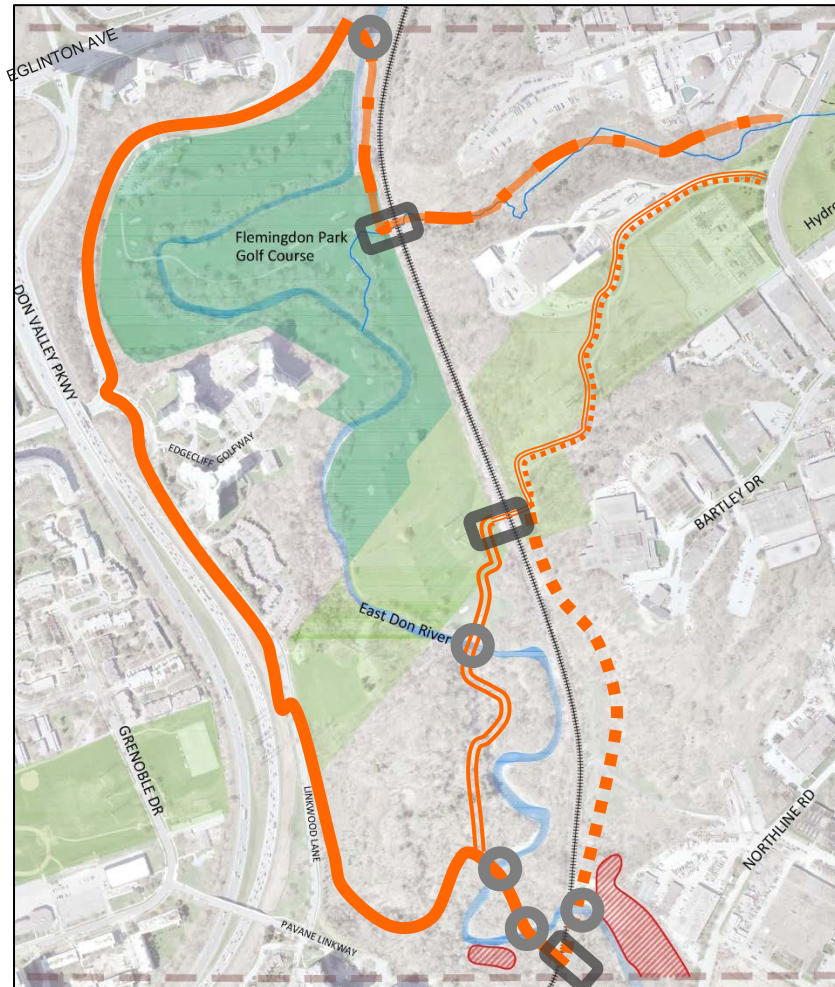
- ~3.3km
- 3 bridges
- 2 rail line crossing



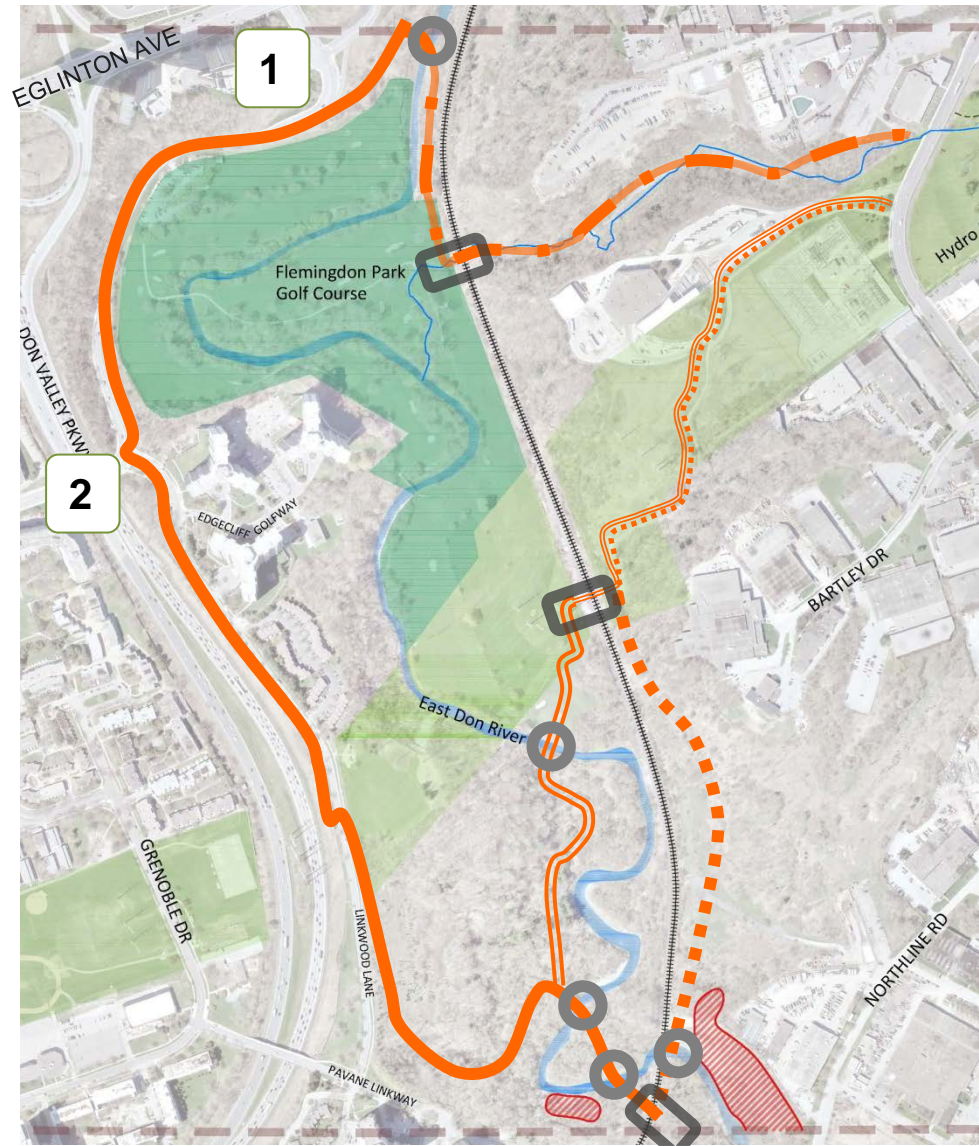
Road Link C

- ~3.4km
- 3 bridges
- 1 rail line crossing

Area 2: Road Link A, B & C



Area 2: Road Link A, B & C

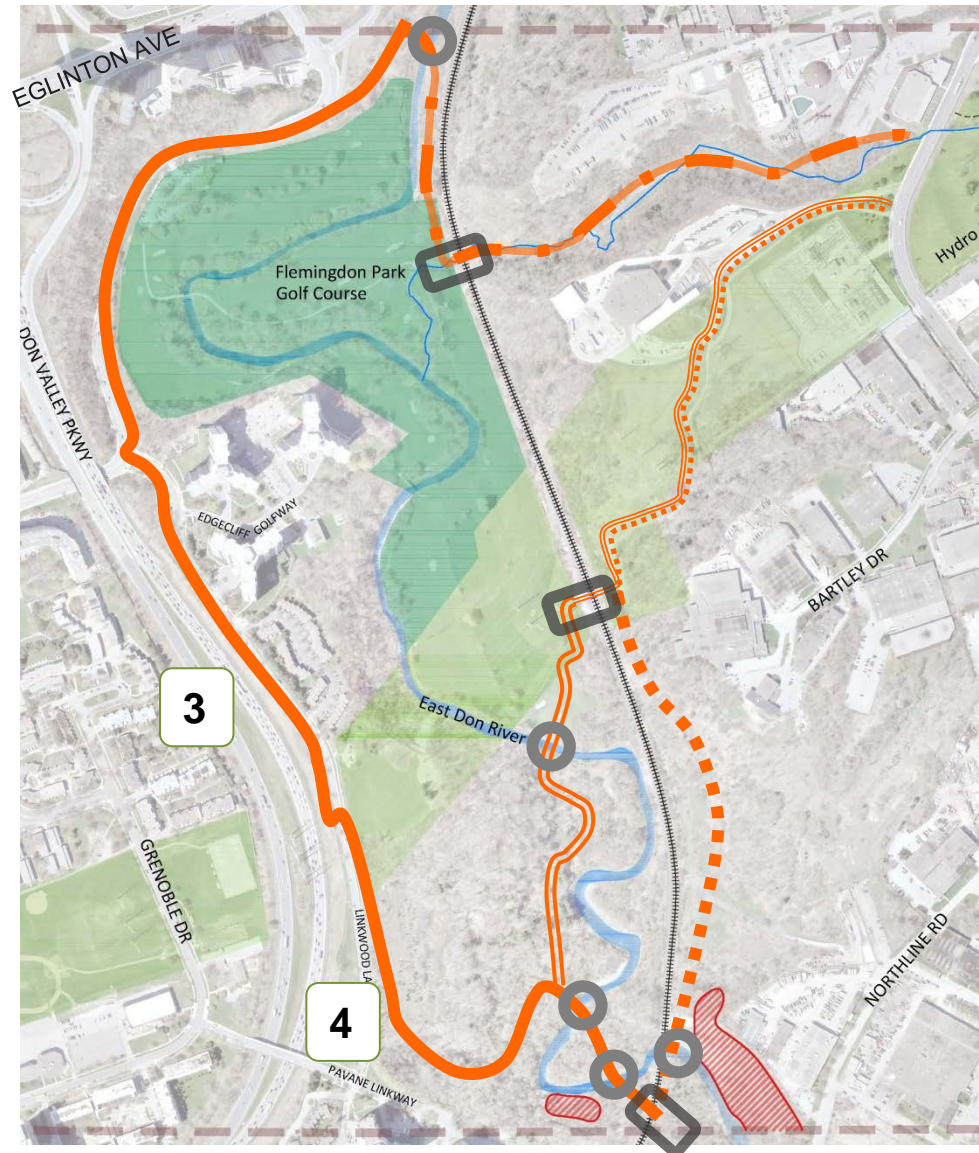


1. Steep access between road and valley



2. Potential road crossing

Area 2: Road Link A, B & C

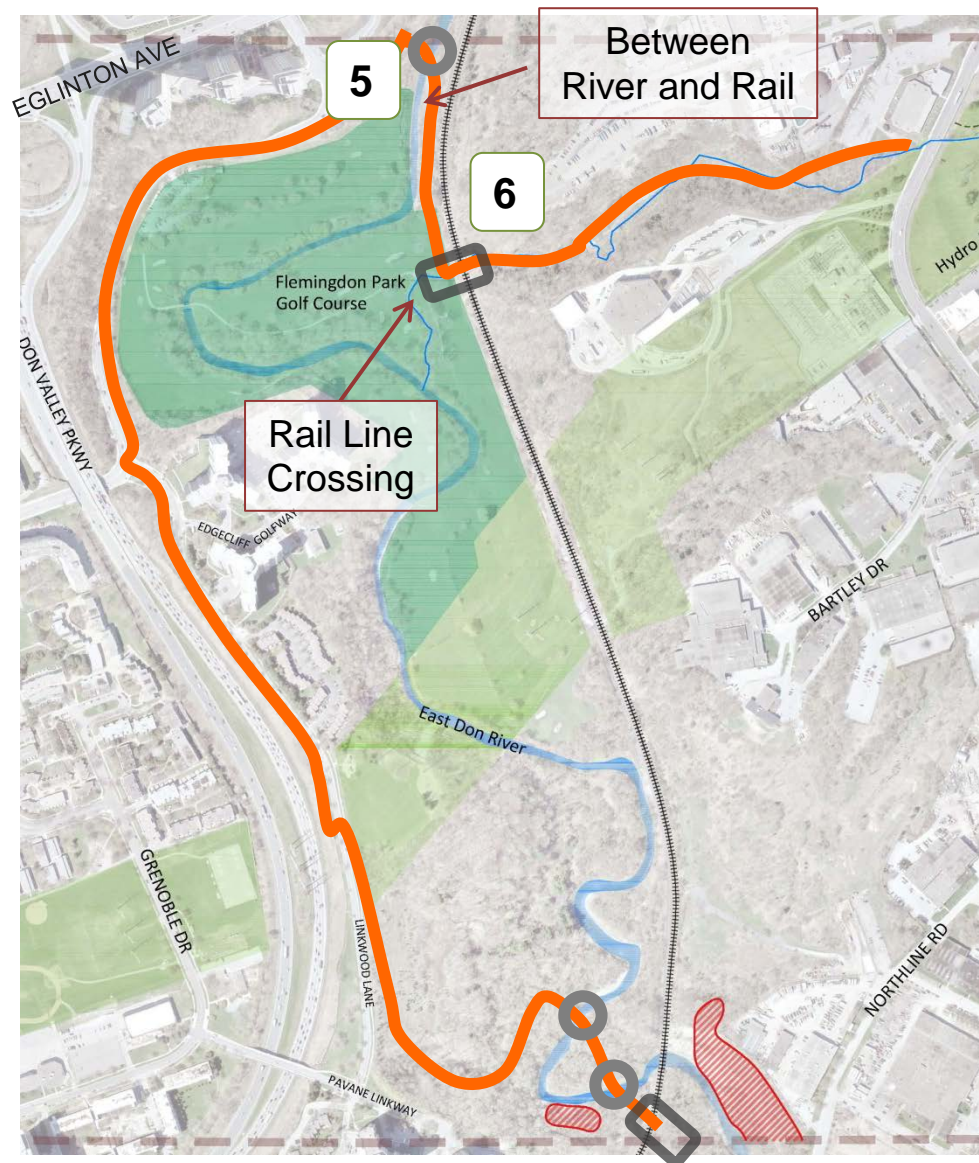


3. Linkwood Lane

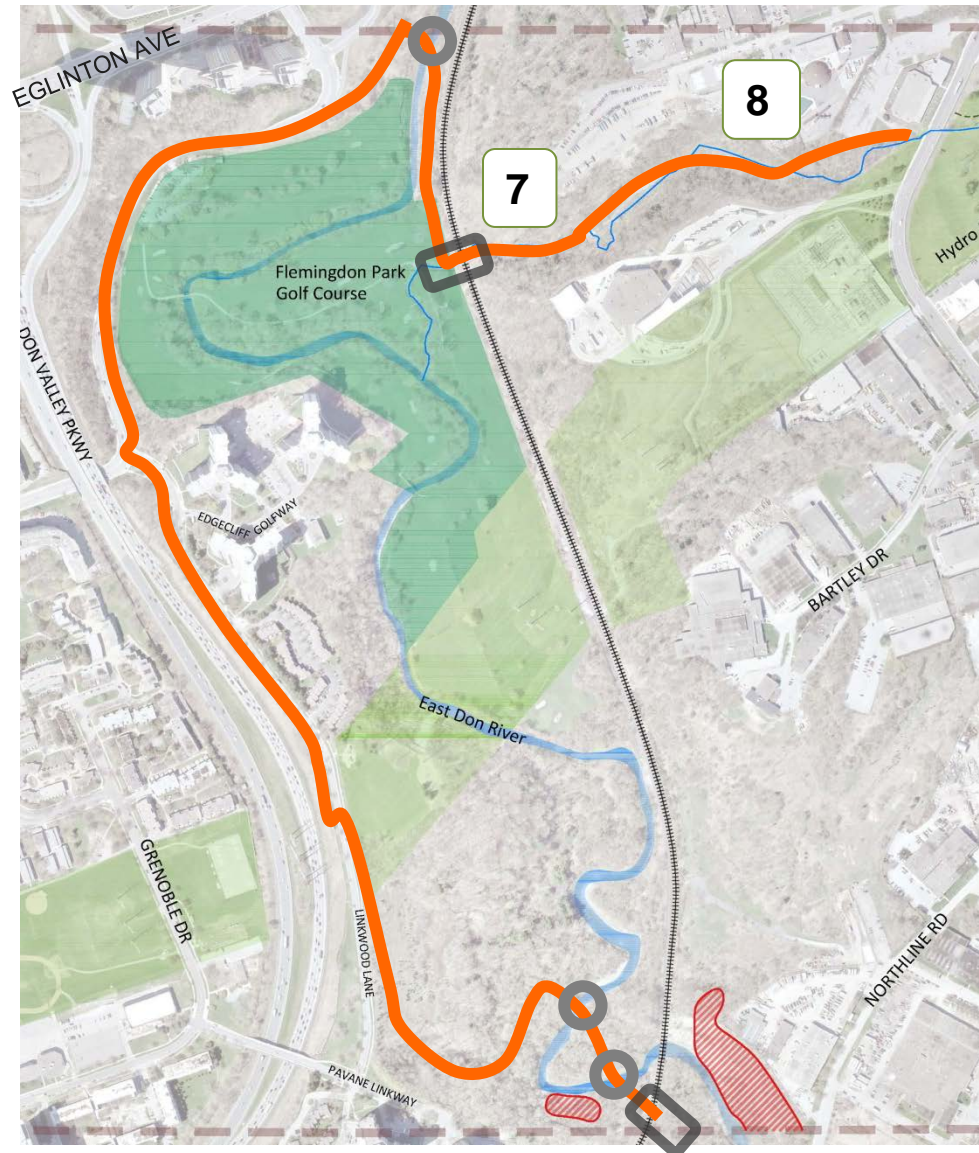


4. Steep access between road and valley

Area 2: Road Link A



Area 2: Road Link A

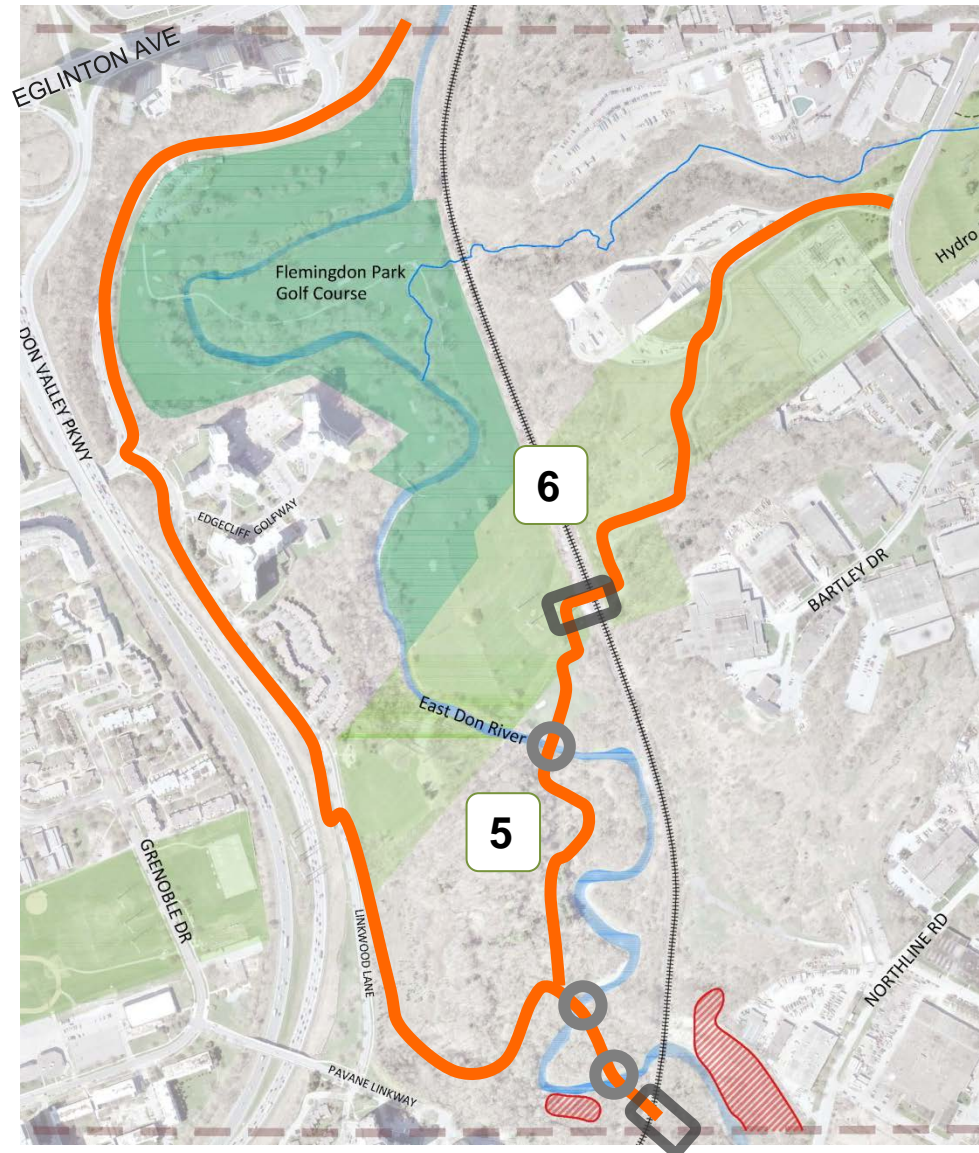


7. Steep forested area



8. Existing access route

Area 2: Road Link B



5. Forested area within floodplain



6. Potential crossing of rail line

Area 2: Road Link B

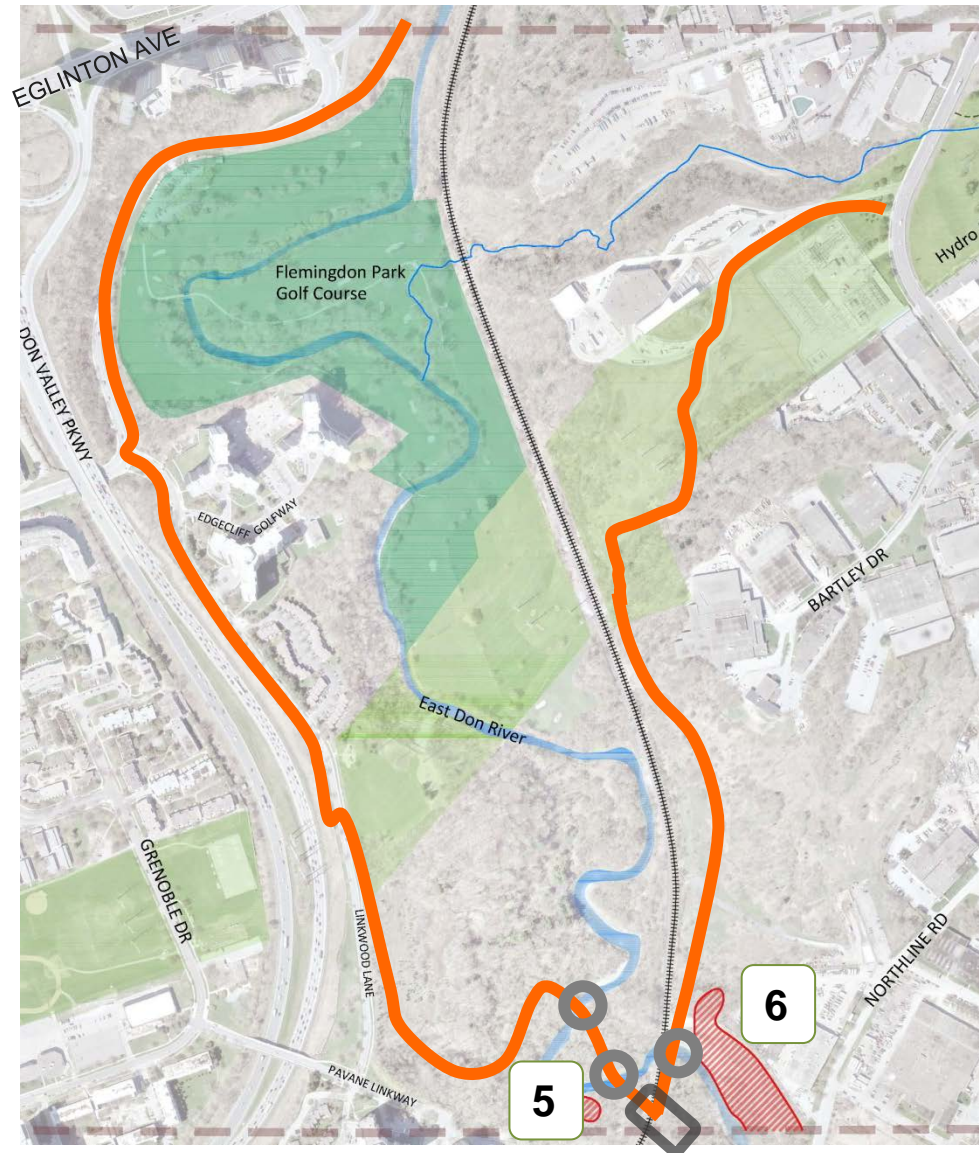


7. Access route out of valley lands



8. Existing access route in hydro corridor

Area 2: Road Link C

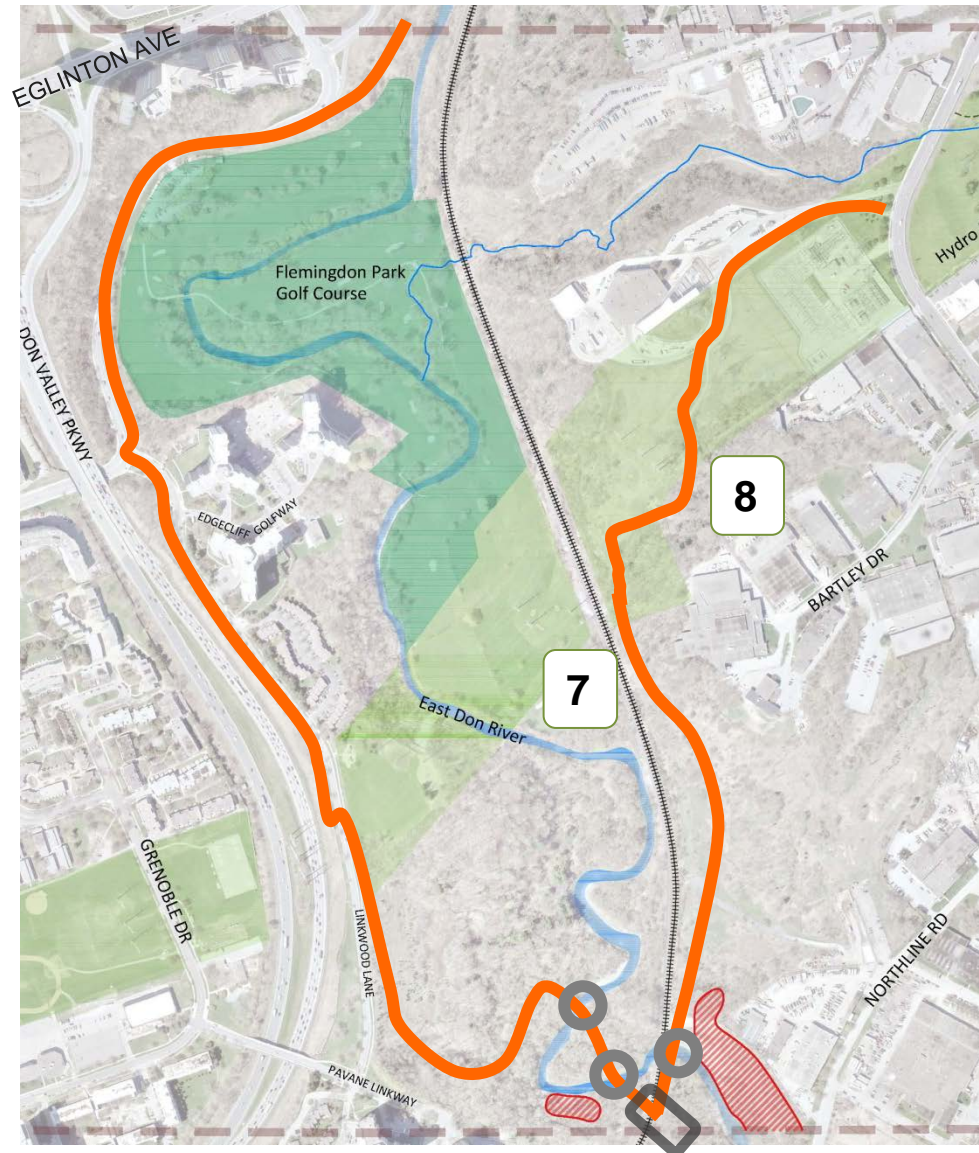


5. Adjacent rail line within valley



6. Large erosion, pinch point

Area 2: Road Link C

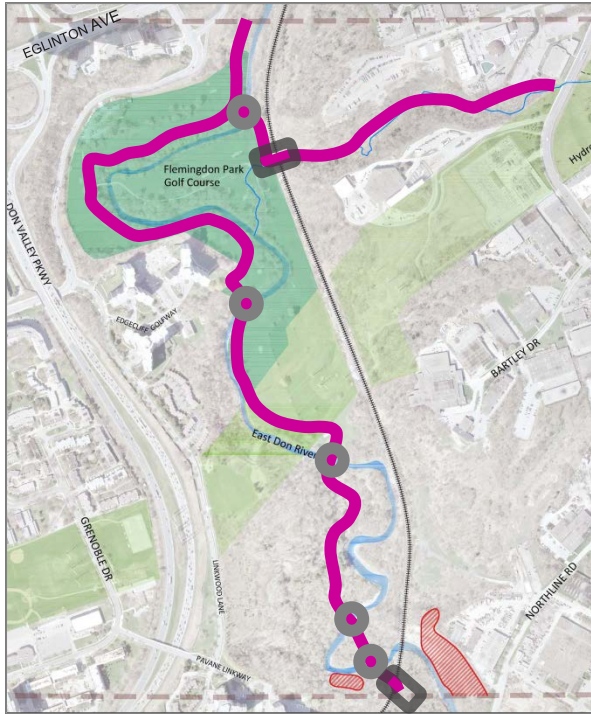


7. Adjacent rail line within valley



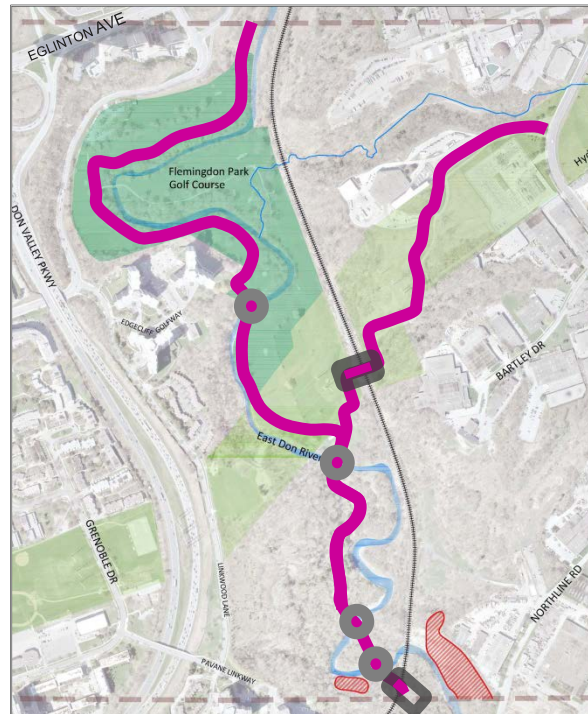
8. Existing access route in hydro corridor

Area 2: River Walk A, B & C



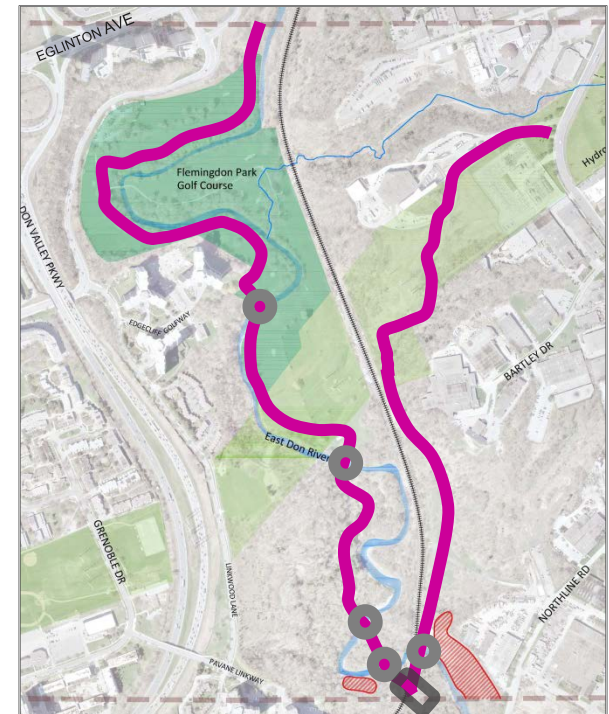
River Walk A

- ~2.7km
- 5 bridges
- 2 rail line crossing



River Walk B

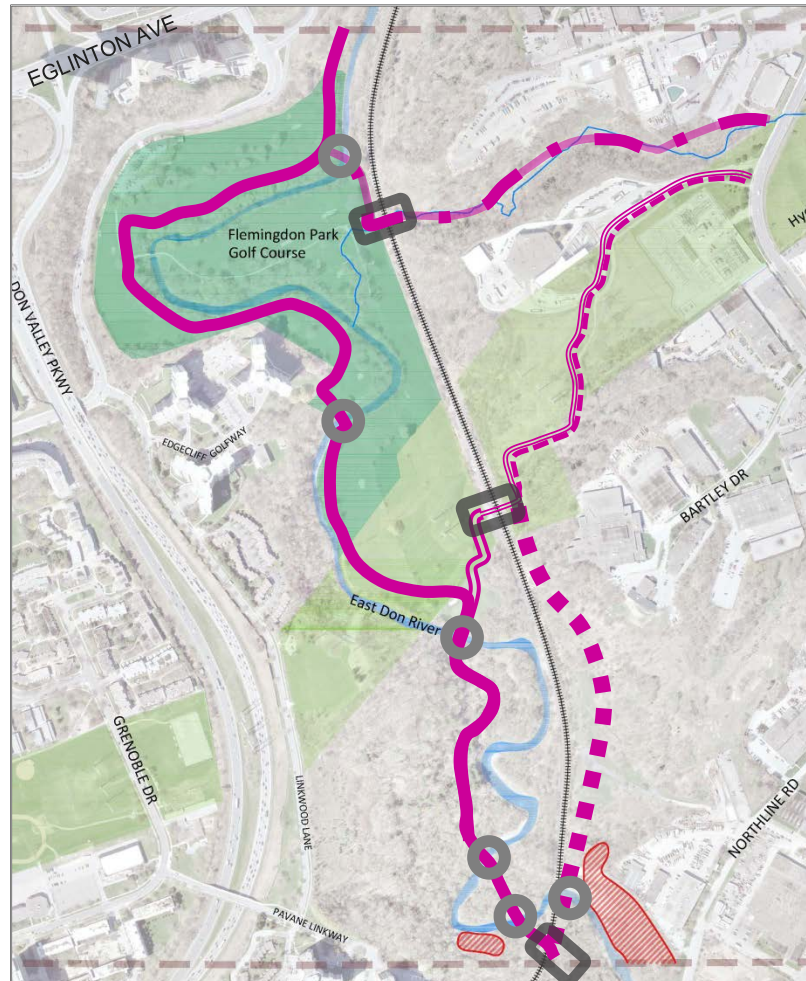
- ~2.8km
- 4 bridges
- 2 rail line crossing



River Walk C

- ~3.4km
- 5 bridges
- 1 rail line crossing

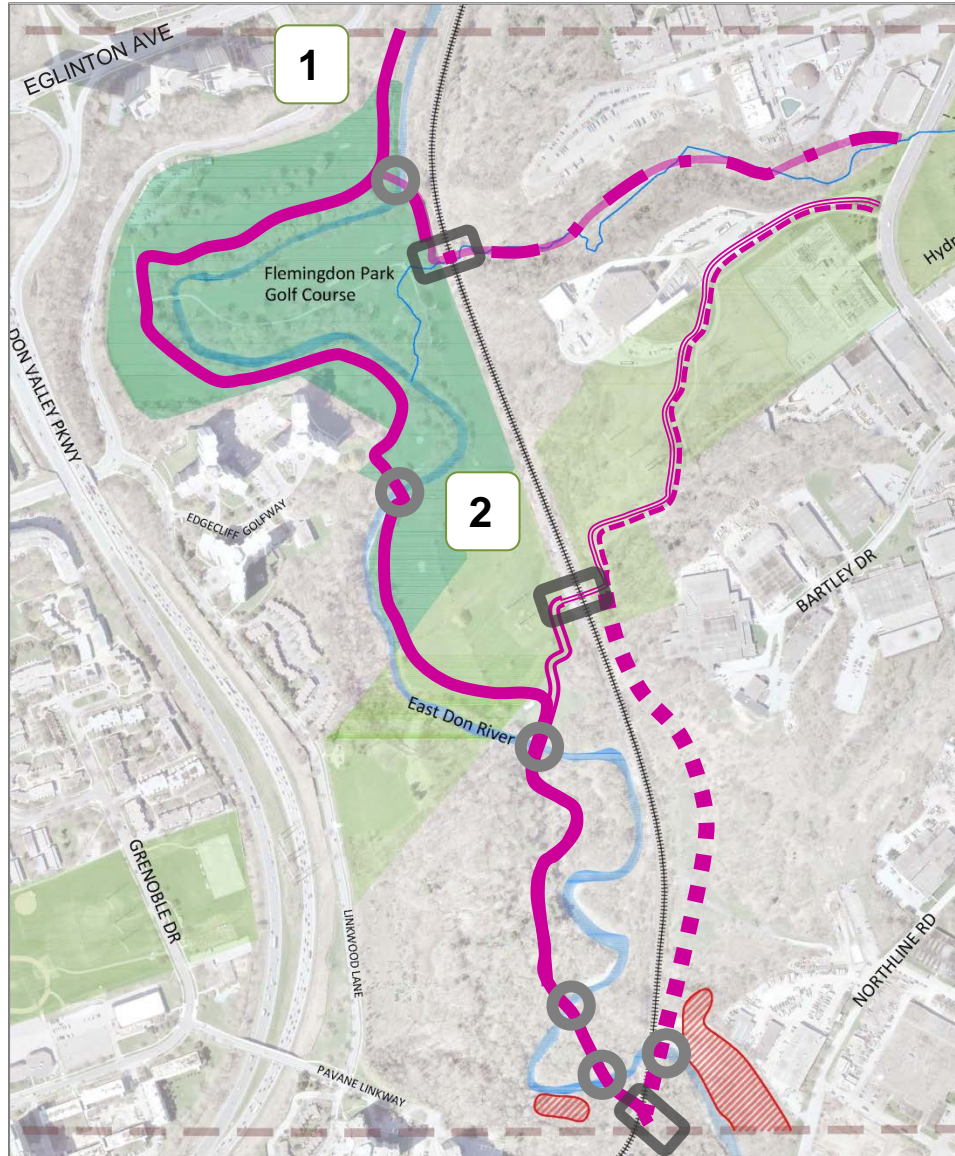
Area 2: Road Link A, B & C



Alternative Trail Alignments

-  Road Link A (~2.7km)
-  Road Link B (~2.8km)
-  Road Link C (~3.4km)
-  Common to All
-  Existing Trail
-  Bridge Crossing
-  Potential Slope Stability Issues
-  Rail Line Crossing

Area 2: River Walk A, B & C

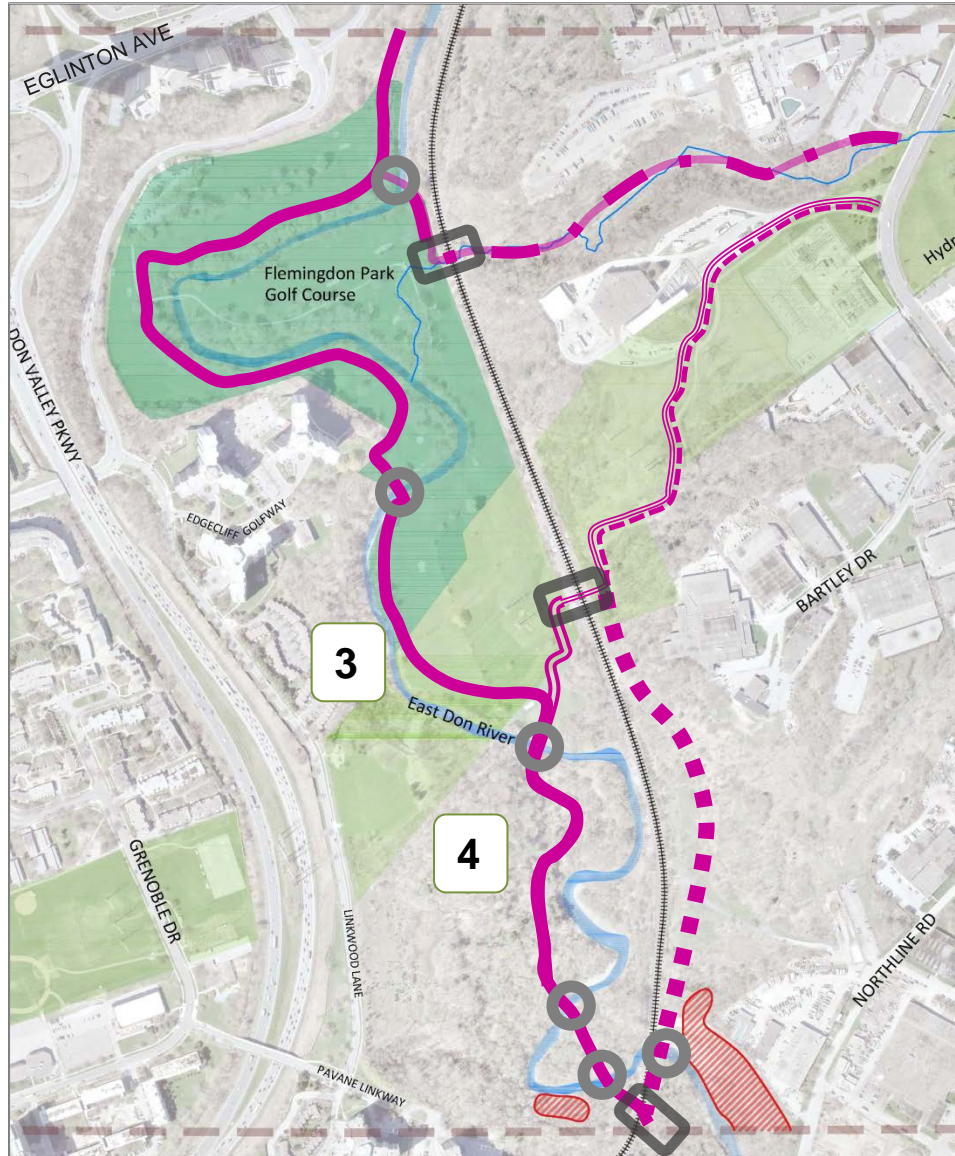


1. Northern end of golf course



2. Aerial view of golf course

Area 2: River Walk A, B & C

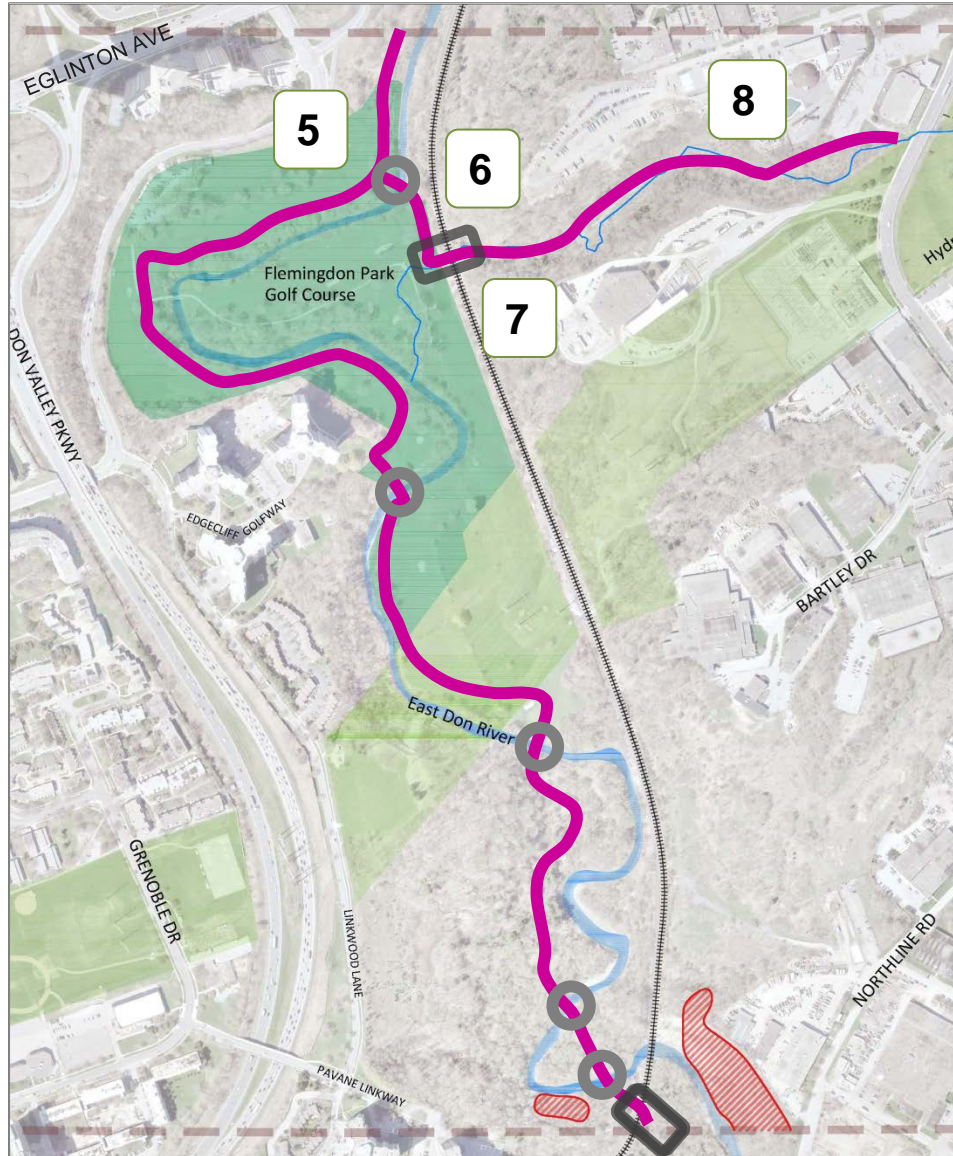


3. Golf course and Hydro corridor



4. Informal path through forested area

Area 2: River Walk A



5. Potential river crossing



6. Potential rail line crossing

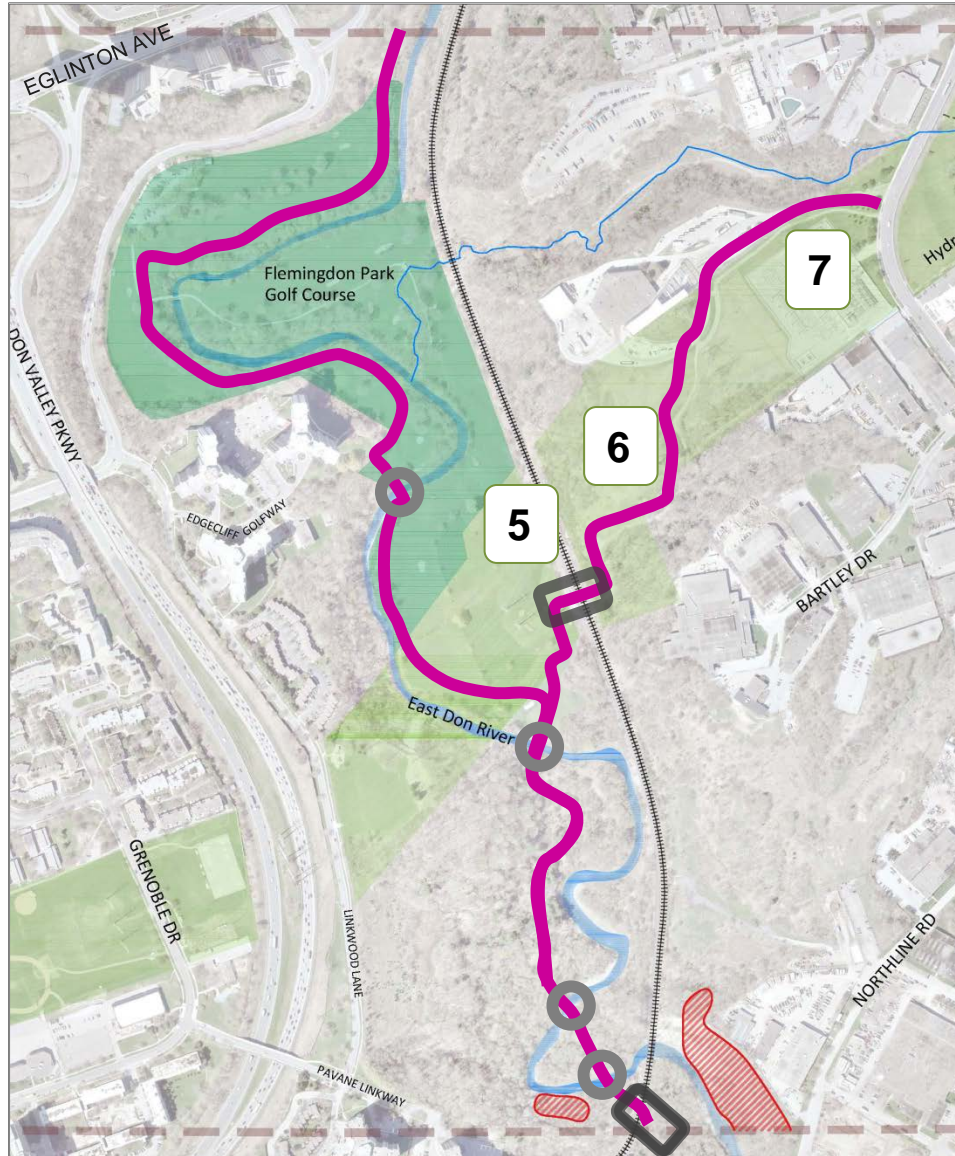


7. Steep forested area



8. Existing access route

Area 2: River Walk B



5. Potential crossing of rail line

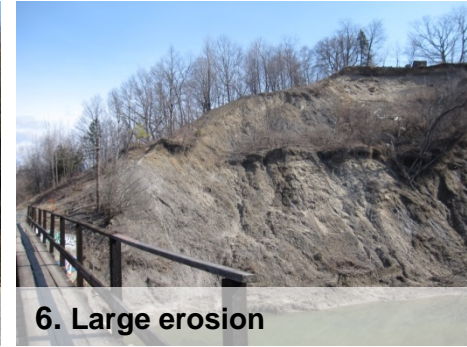
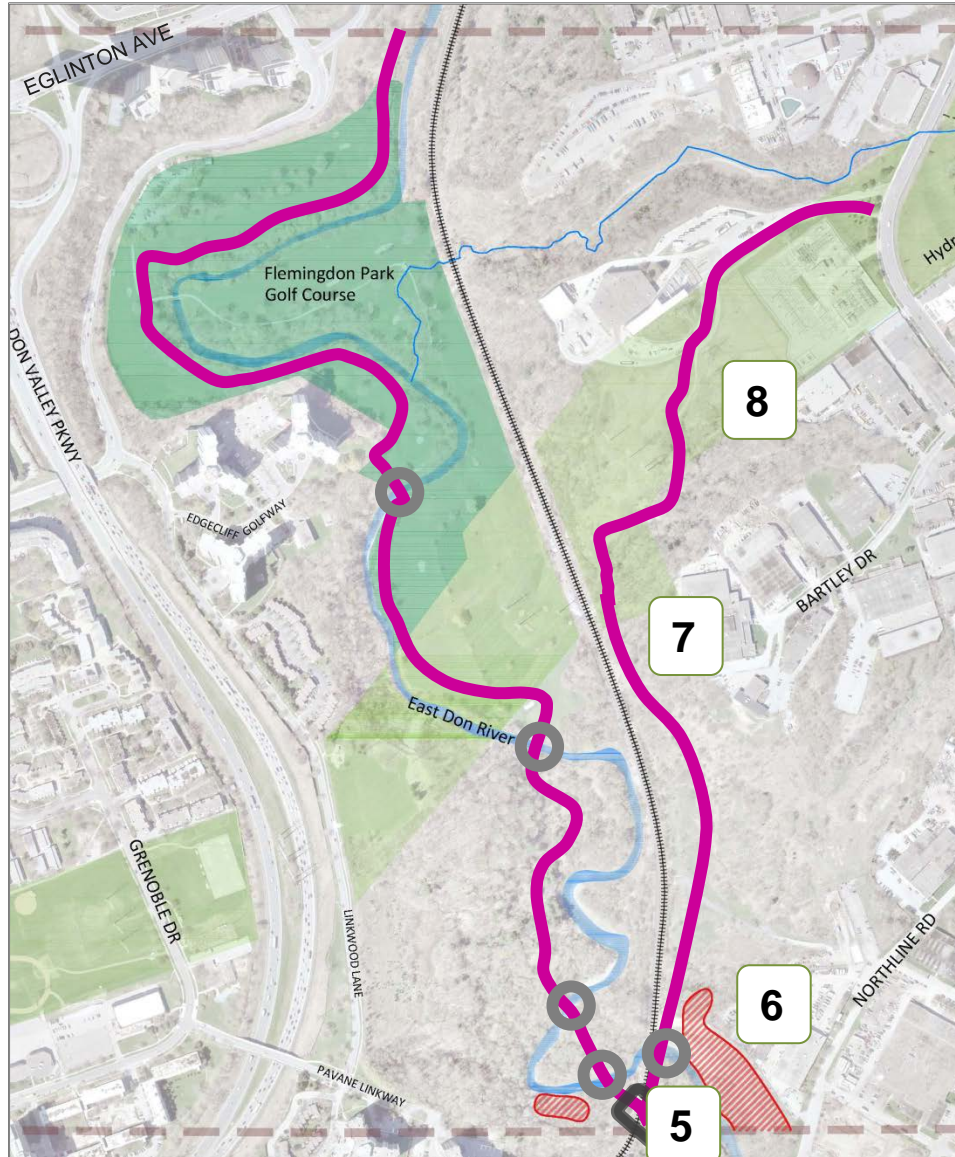


6. Access route

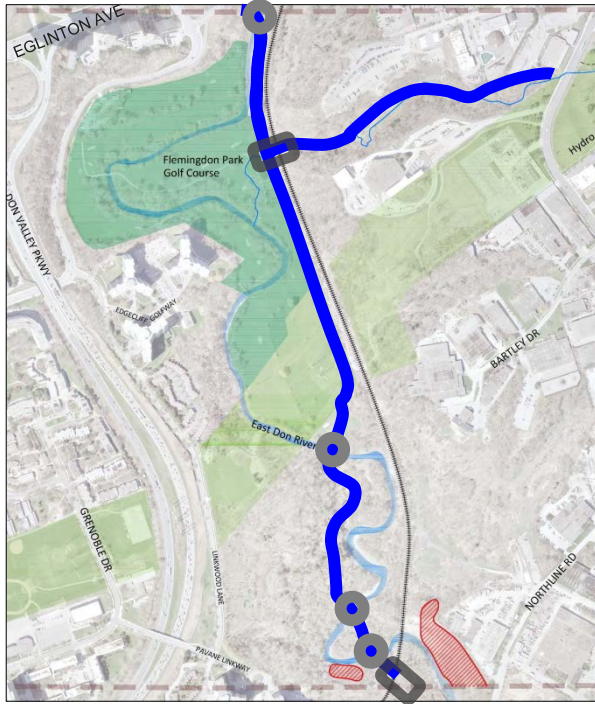


7. Existing access route

Area 2: River Walk C

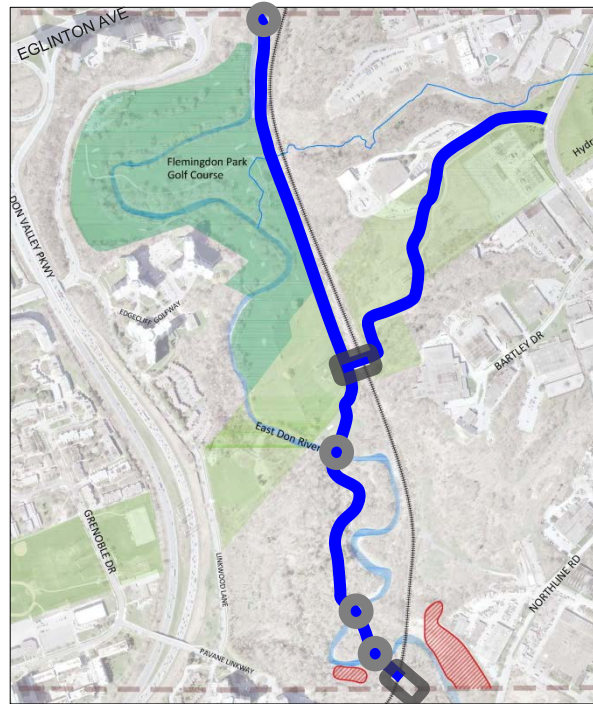


Area 2: Rail Trail A, B & C



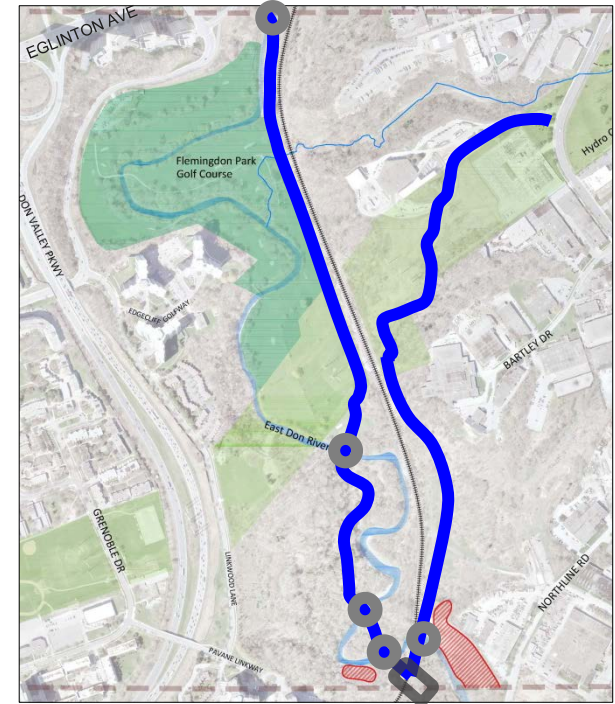
Rail Trail A

- ~2.1km
- 4 bridges
- 2 rail line crossing



Rail Trail B

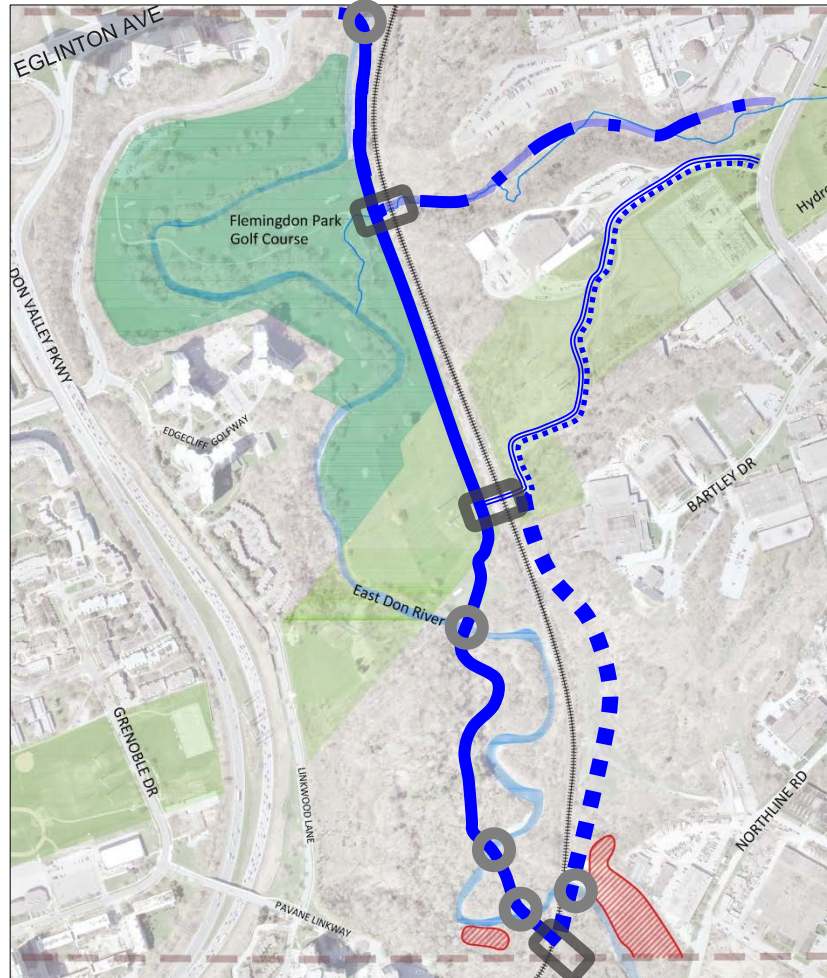
- ~2.2km
- 4 bridges
- 2 rail line crossing











Rail Trail C

- ~2.9km
- 5 bridges
- 1 rail line crossing

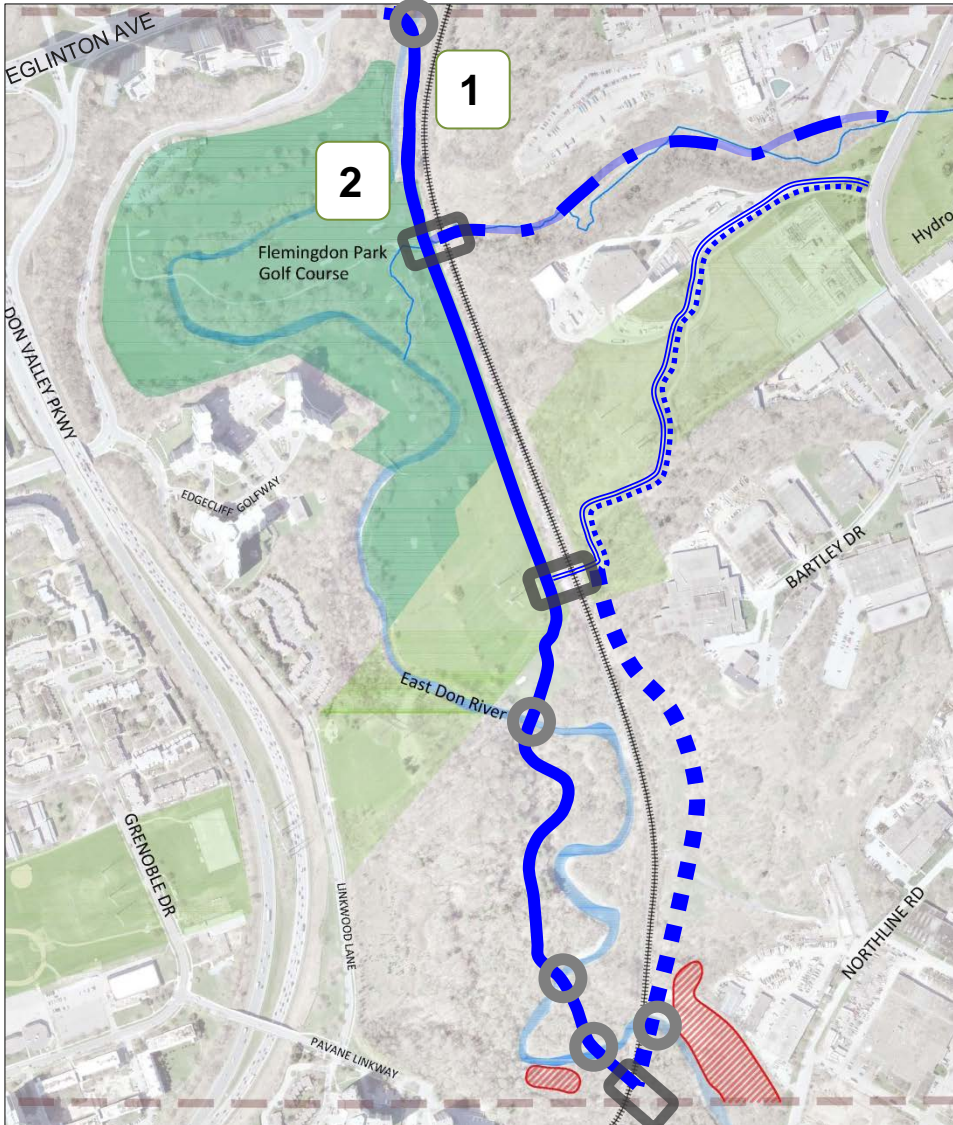
Area 2: Rail Trail A, B & C



Alternative Trail Alignments

-  Road Link A (~2.1km)
-  Road Link B (~2.2km)
-  Road Link C (~2.9km)
-  Common to All
-  Existing Trail
-  Bridge Crossing
-  Potential Slope Stability Issues
-  Rail Line Crossing

Area 2: Rail Trail A, B & C

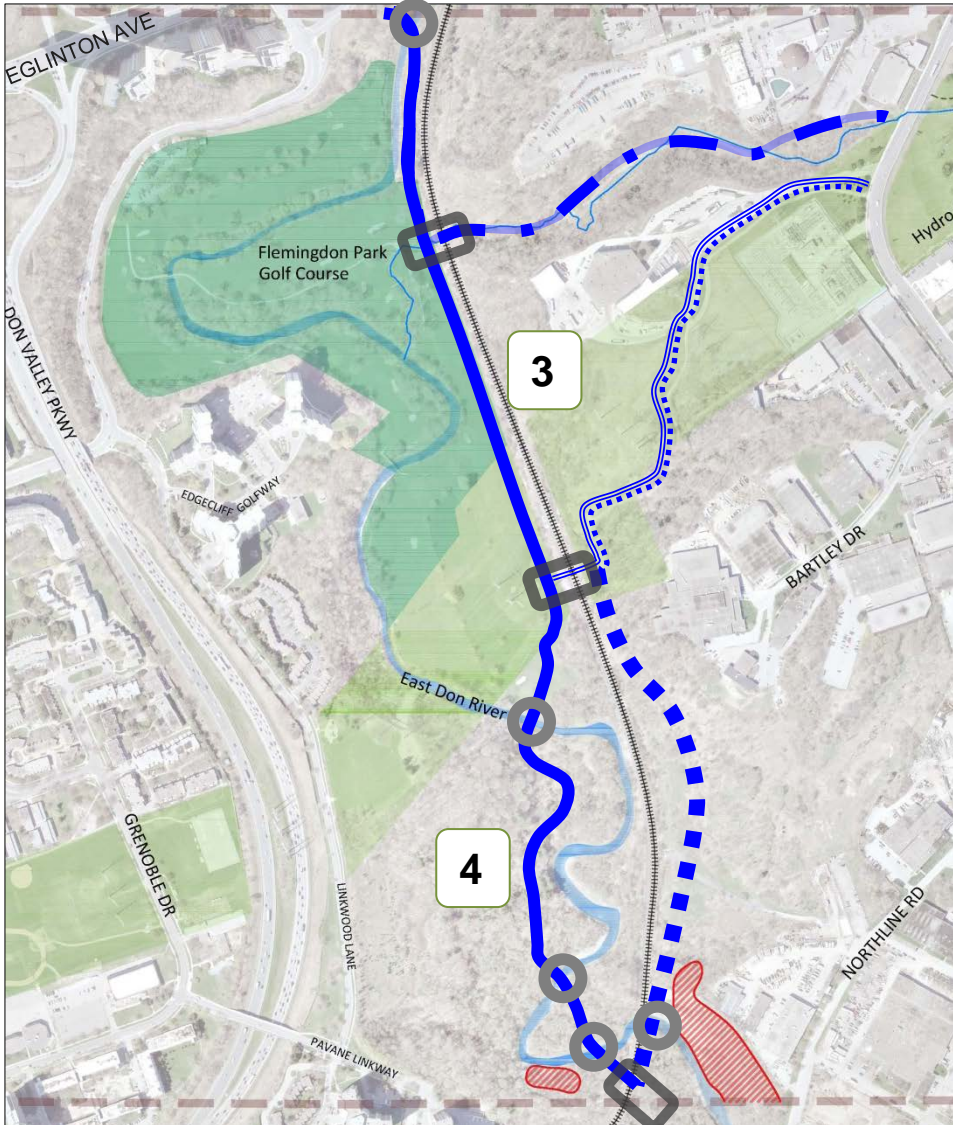


1. Between rail line and golf course



2. Rail line right of way

Area 2: Rail Trail A, B & C

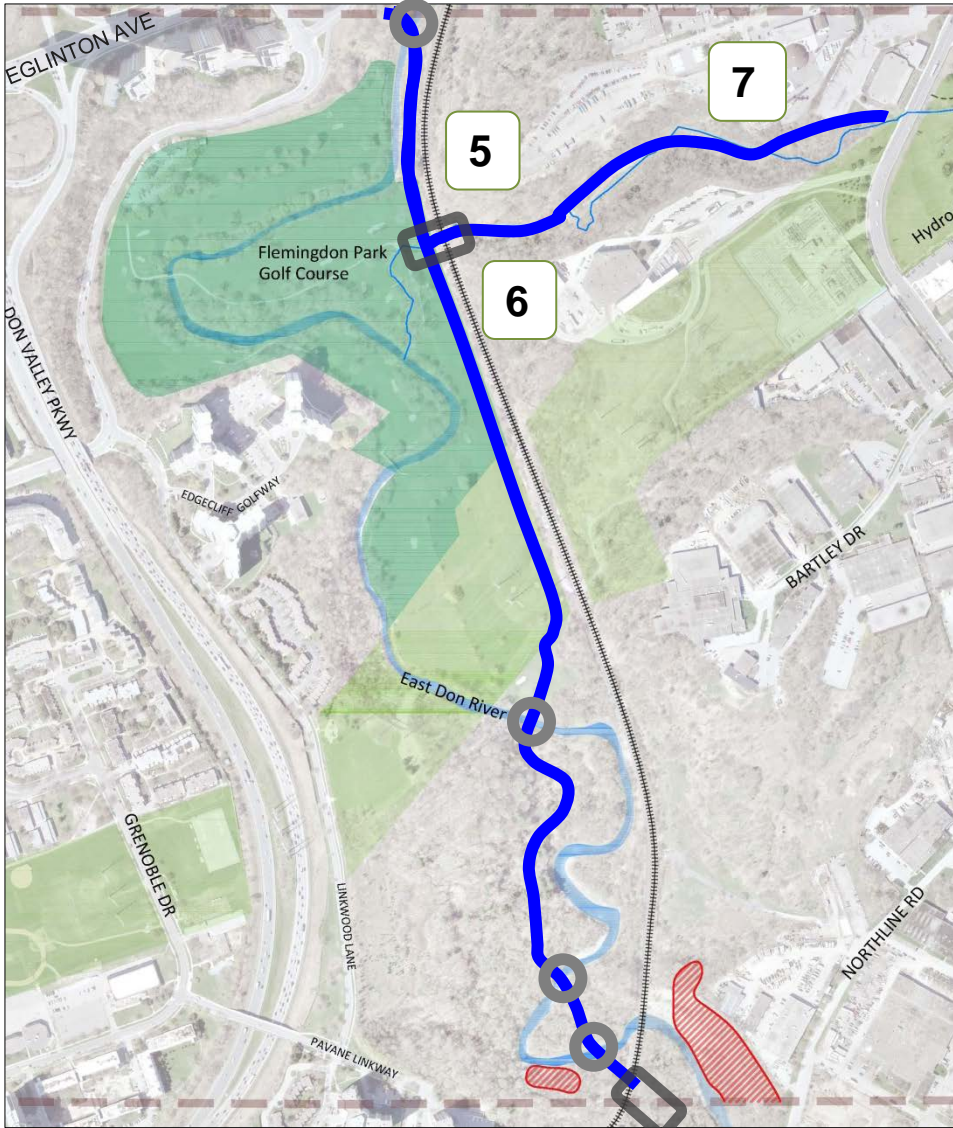


3. Rail line right of way



4. Informal path through forested area

Area 2: Rail Trail A



5. Potential rail line crossing

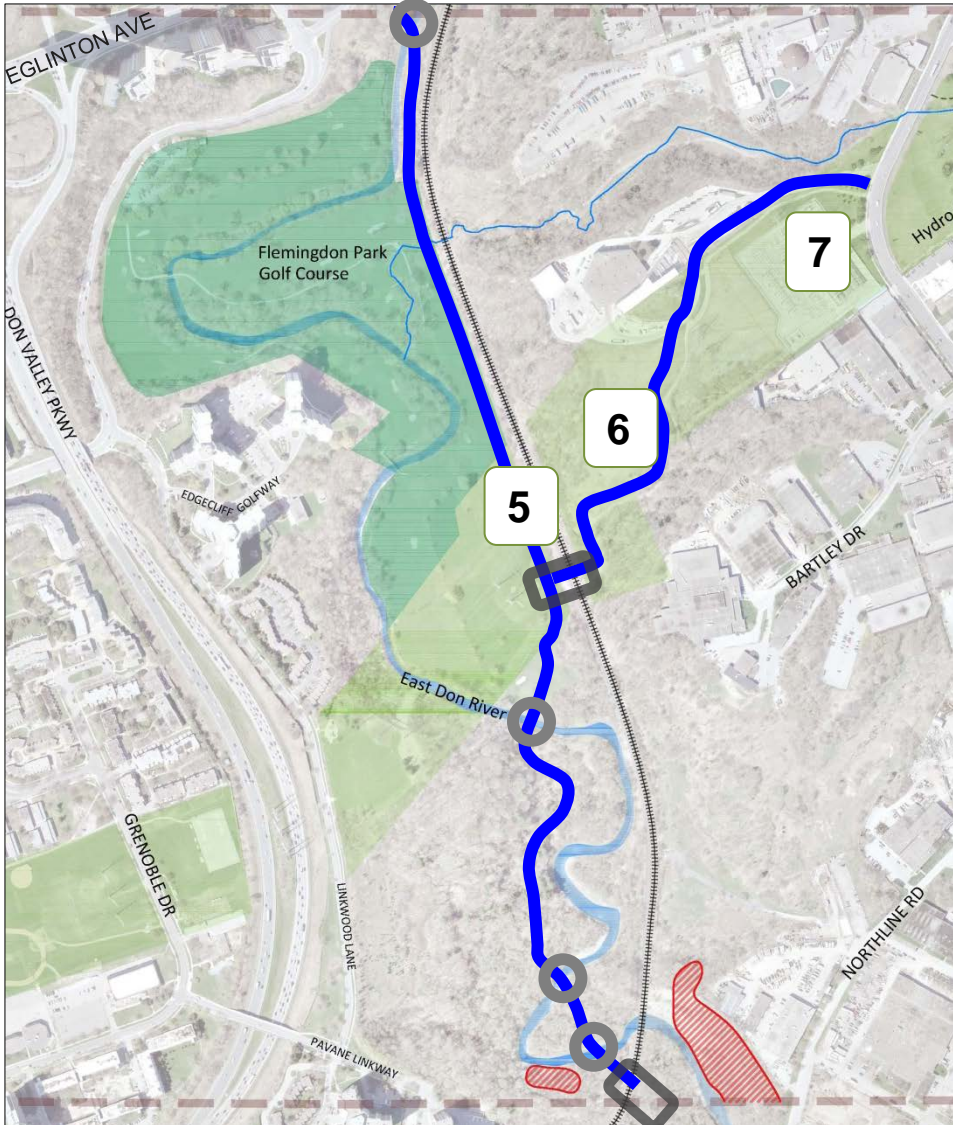


6. Steep forested area



7. Existing access route

Area 2: Rail Trail B



5. Potential crossing of rail line

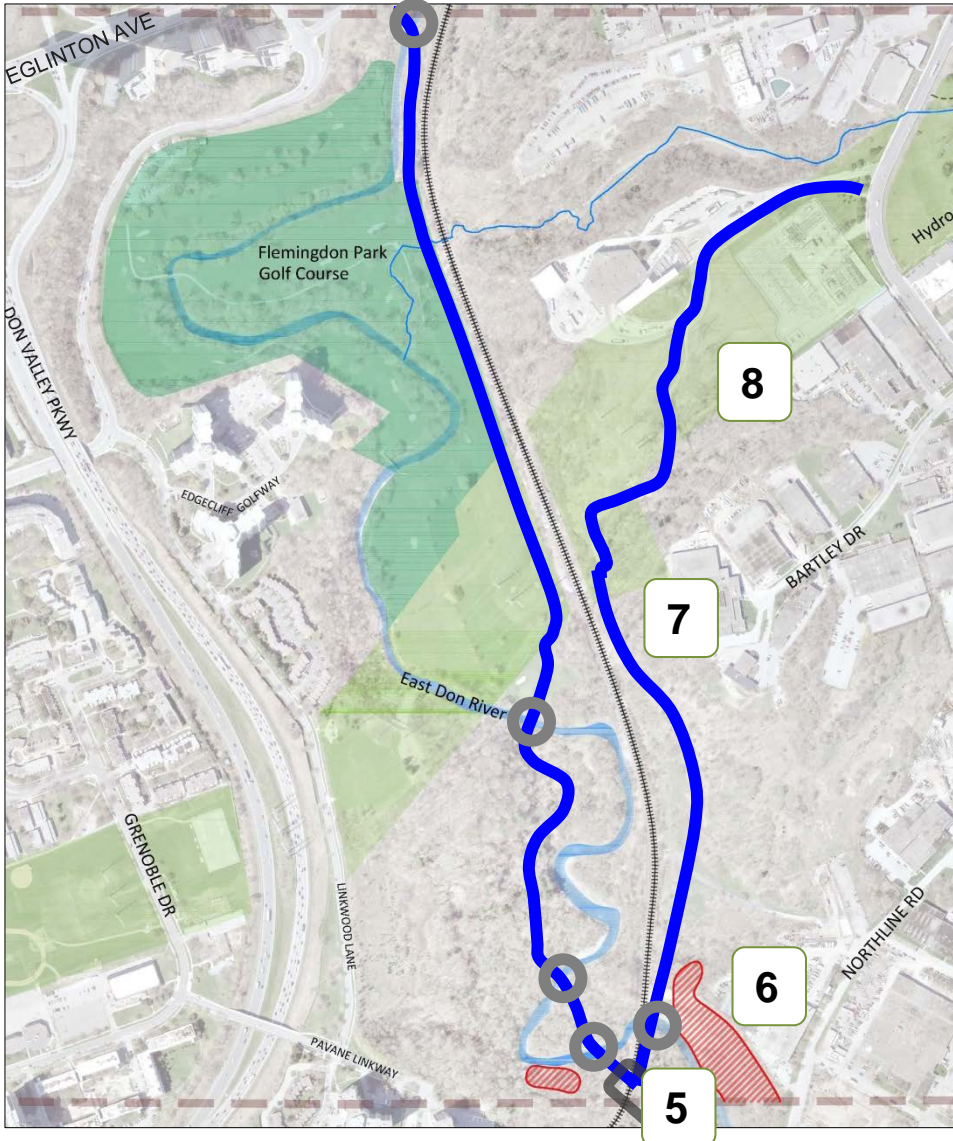


6. Access route

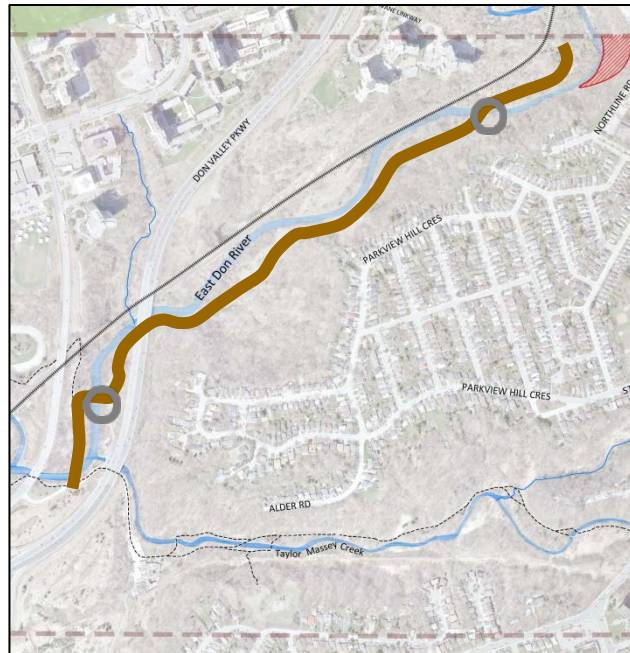


7. Existing access route

Area 2: Rail Trail C



Area 3: Access Route A, B & C



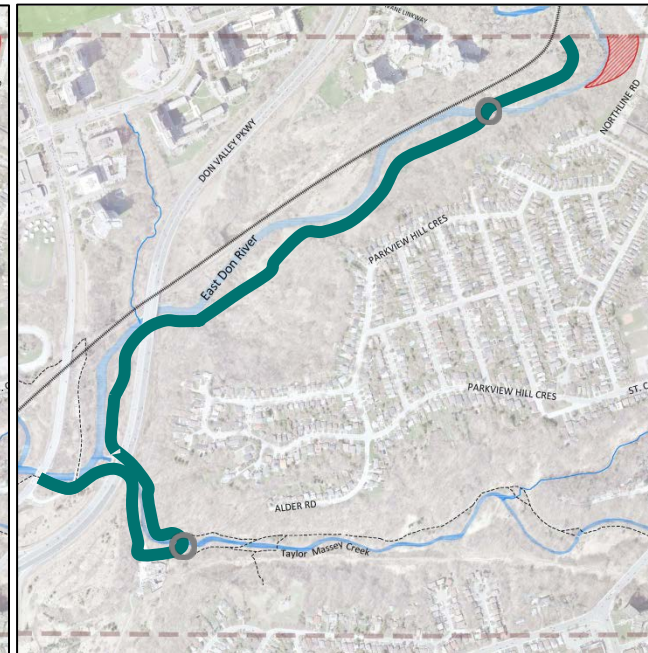
Access Route A

- ~1.7km
- 2 bridges
- Passes under DVP once



Access Route B

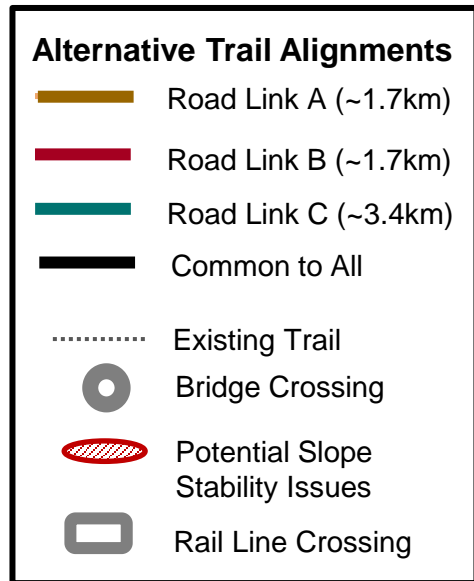
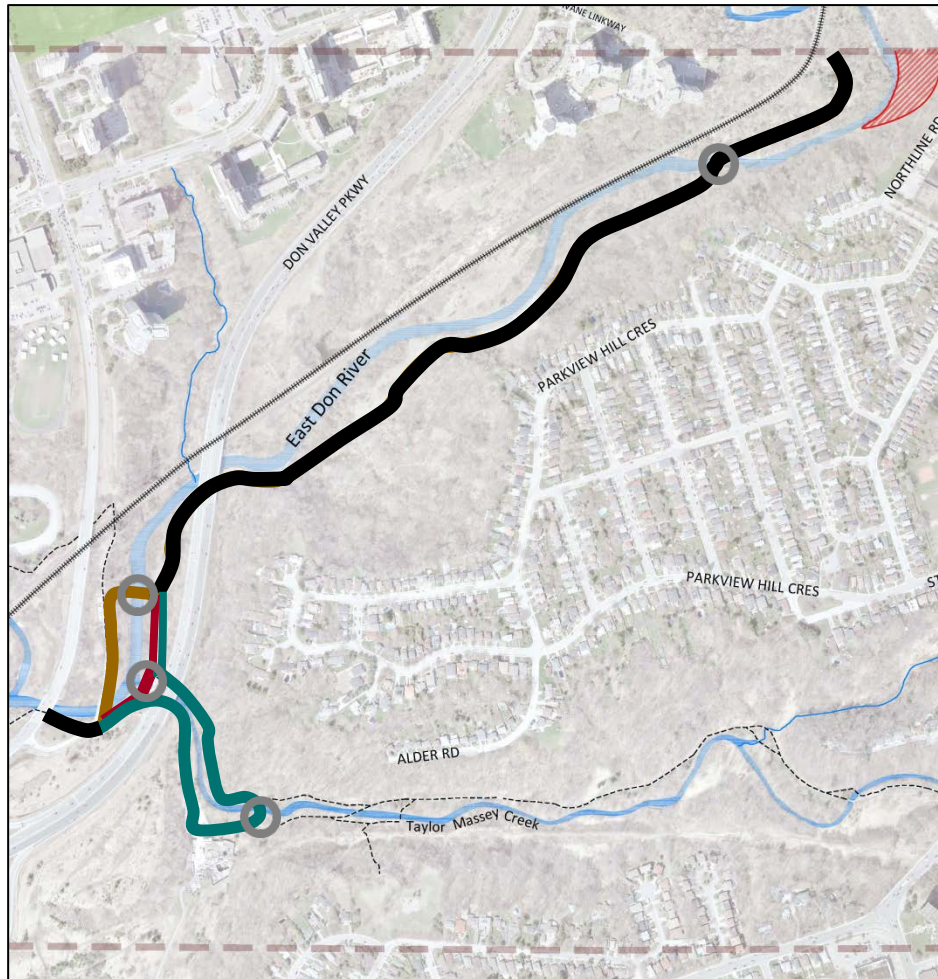
- ~1.7km
- 2 bridges
- Passes under DVP once



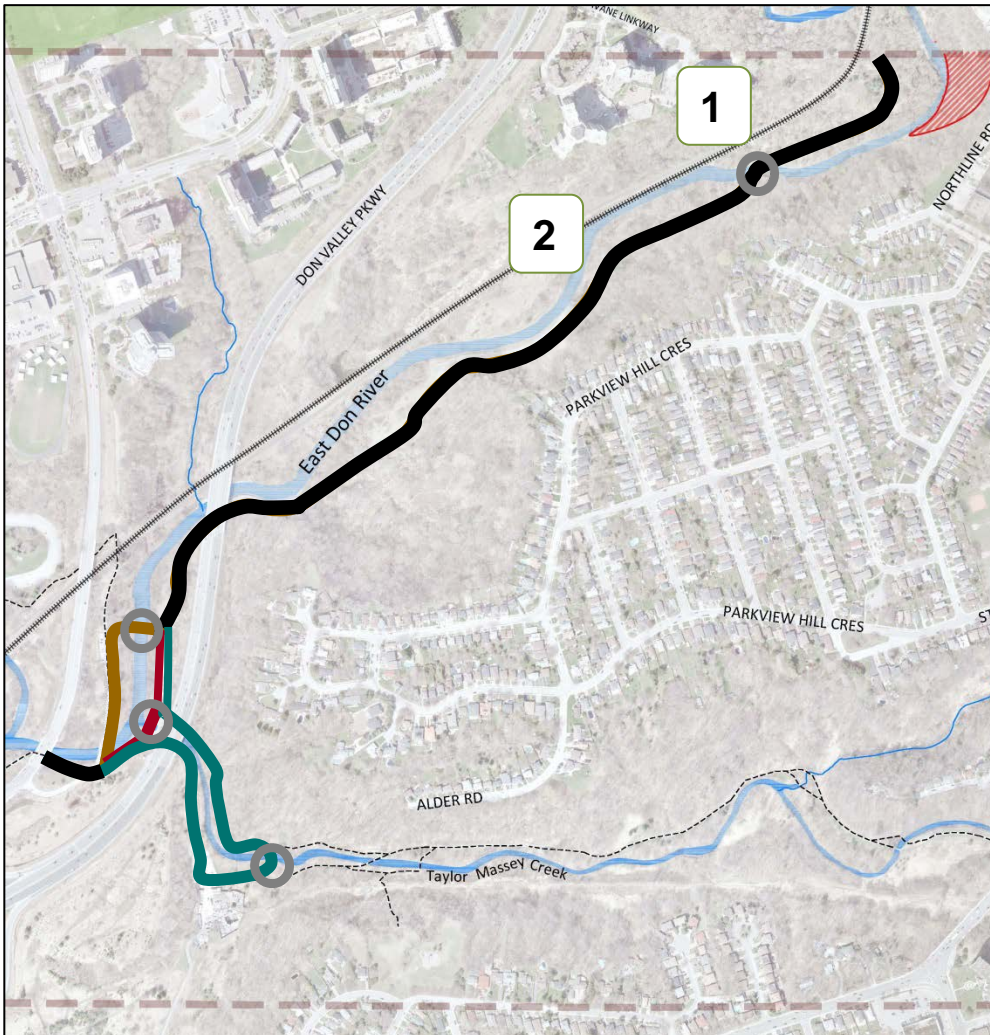
Access Route C

- ~2.2km
- 1 new bridge, 1 bridge replacement
- Passes under DVP three times

Area 3: Access Route A, B & C



Area 3: Access Route A, B & C

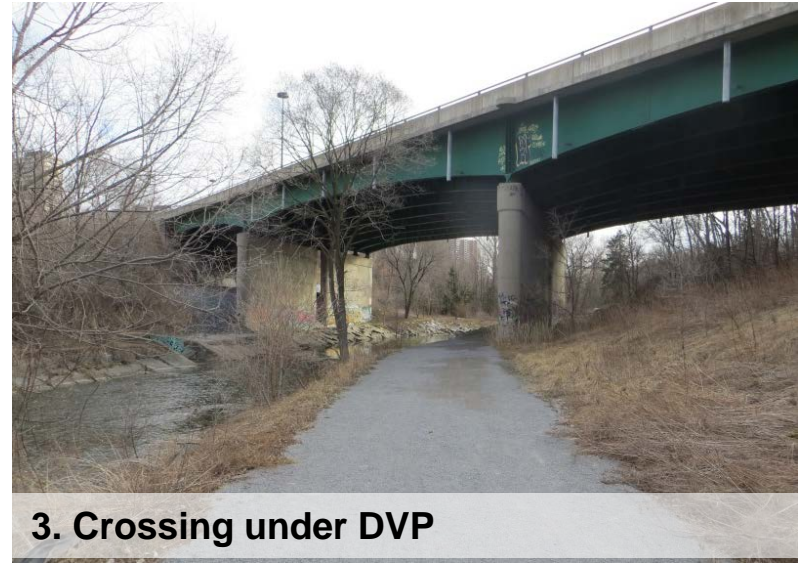
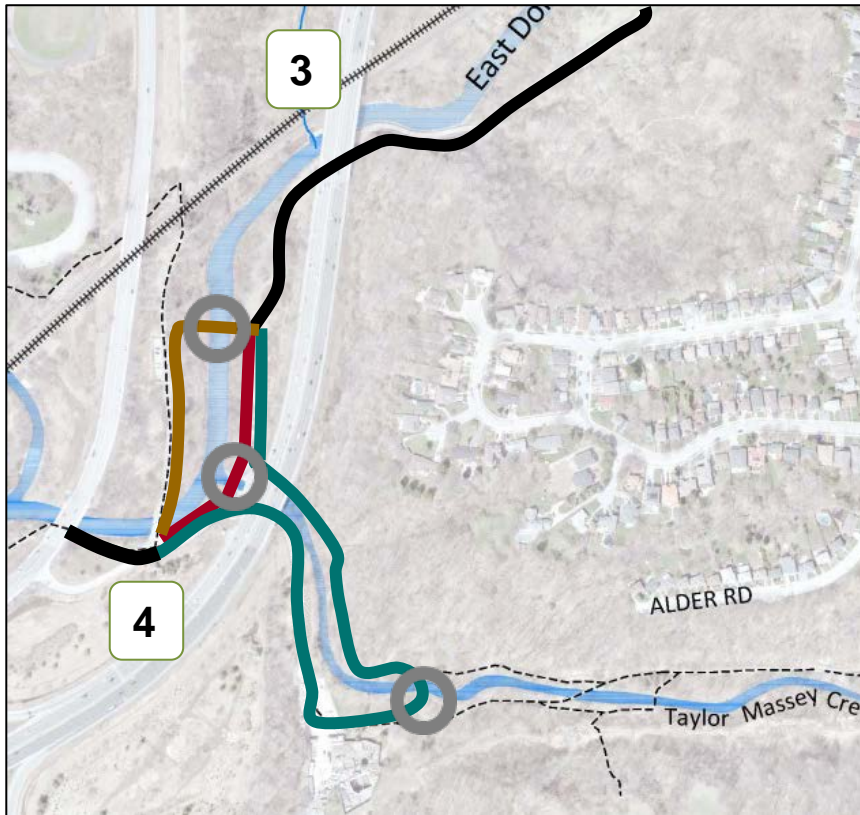


1. Potential river crossing location



2. Existing access route

Area 3: Access Route A, B & C



3. Crossing under DVP



2. Connection to Lower Don Trails

Feedback and Input

We'd like your input at this key stage of the EA process!

- Do you agree with the proposed trail alignments as presented?
- Do you agree with the evaluation criteria
- Do you agree with the draft evaluation?
- From the evaluation which alignment do you prefer?

Questions?

