

WATERSHED *moments*



LOCATION:
Goodwood Community Centre, Duffins Creek Watershed

DATE:
Saturday October 19, 2019

REGION/MUNICIPALITY:
Durham Region, Village of Goodwood

IN COLLABORATION WITH:
Toronto and Region Conservation Authority (TRCA), Durham Region, Town of Uxbridge, Uxbridge Watershed Advisory Committee, York/Durham Chapter Ontario Woodlot Association, Mayor Dave Barton, Councillor Pamela Beach and Local Residents



Goodwood Community Centre, Community-Based Restoration Planting with Local Residents

Toronto and Region Conservation Authority (TRCA), in collaboration with the Town of Uxbridge, York/Durham Chapter Ontario Woodlot Association, Uxbridge Watershed Advisory Committee and local residents, hosted a native tree and shrub planting on the property behind Goodwood Community Centre.

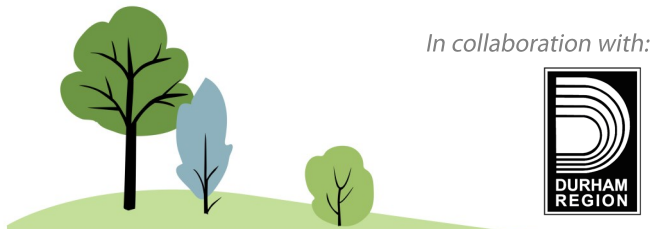
A group of over thirty enthusiastic participants attended a presentation by TRCA staff, who explained some of the stages of restoring and enhancing a natural space. Afterwards, participants gathered along the newly created trail behind the community centre and were welcomed by Mayor Dave Barton and Councillor Pamela Beach. TRCA staff provided a safety talk and planting demonstration, and the group began to plant 120 native trees and shrubs to enhance a former agricultural field. Some of the attendees also became citizen scientists to assist staff with collecting data for TRCA's Young Tree and Shrub Monitoring and Maintenance Program (YTMP). YTMP tracks success at sites by implementing a maintenance strategy for three to five years to control invasive vegetation encroachment, and measure and collect data on plant health.

Engaging local residents and community groups with enhancement activities provides a better understanding to the importance of healthy natural areas. Maintaining these areas through litter cleanups and returning to collect data, assists in tracking success at sites.



Positive Environmental Impacts

Vegetation Planted	# of Pieces Planted	Total Area Enhanced (sq.m.)	# of Participants	Participant Hrs Contributed
Trees	50	125	35	105
Shrubs	70	105		
Total	120	230	35	105



# of Participants	# of Garbage Bags	Total Weight (lbs)	Total Area Enhanced (sq.m.)
40	39	353	1,538