

GET THEM OUTSIDE!

ELEMENTARY SCHOOL FIELD TRIP GUIDE



trca.ca/learning



Toronto and Region
Conservation
Authority

INSPIRE STUDENTS

THROUGH EXPLORATION WITH TRCA

With over 60 years of experience in environmental conservation and education, Toronto and Region Conservation Authority (TRCA) aims to foster sustainable citizenship through our educational and community-based programming at our sites and facilities throughout the GTA. Our vision is for a new kind of community—The Living City—where human settlement can flourish forever as part of nature's beauty and diversity.

TRCA education provides hands-on learning opportunities for classes of all grades in relevant, authentic, and local environments in the areas of nature, ecology, and cultural heritage. By incorporating these experiences into education, students are encouraged to better understand environmental, sustainability, and urban issues, as well as create a stronger sense of place.

Our Ontario Certified Teachers (OCT) and environmental education professionals develop and deliver exceptional curriculum-linked programming at our premier facilities and sites. TRCA is the ideal one-stop-shop for Ontario teachers looking for outdoor, environmental, geography, science, art and/or cultural heritage education programs.

At TRCA we are committed to providing a safe and healthy learning environment for all visitors. Our education staff are trained in Standard First Aid and CPR. We adhere to Ontario Physical Education Safety Guidelines which are managed by the Ontario Physical and Health Education Association (OPHEA) and represent the minimum standard for risk management practice for school boards in Ontario. TRCA also holds a provisional one Ontario Camps Association (OCA) certification membership.

This guide contains a sample of TRCA's valuable and exciting educational programs.

TABLE OF CONTENTS

Curriculum Links	3
Day Programs	5
Black Creek Pioneer Village	6
Kortright Centre for Conservation	10
Tommy Thompson Park	14
In-Class Visits	16
TRCA Education Network Map	22
Overnight Programs	25
Albion Hills Field Centre	26
Claremont Nature Centre	30
Lake St. George Field Centre	34
Teacher Resources	38
Helpful Hints	39
Sample Overnight Trip Itinerary	40
Overnight Trip Planning Checklist	41

GRADE AND CURRICULUM LINKS

The following symbols will make it easy to select the right programs to fit your classroom needs and achieve your curriculum objectives. Look for them next to the program descriptions.



The Arts



Language



Seasonal/Specialty Program



Geography



Physical Education



Local, Outdoor Environment Required



History



Science and Technology



Mathematics



Social Studies (K-6)



DAY PROGRAMS

TRCA's educational facilities at Kortright Centre for Conservation, Tommy Thompson Park, and Black Creek Pioneer Village specialize in delivering exciting, curriculum-linked, outdoor, environmental, cultural, and historical programs in authentic environments. TRCA is also proud to bring nature education right to your classroom through its in-class visits. Tailored for all age groups including ECE, primary, junior, and intermediate classes, teachers will find the perfect field trip to complement their classroom at any of our premier educational facilities.

Single-day field trips are available at:

Black Creek Pioneer Village, Kortright Centre for Conservation, Tommy Thompson Park, and your school (led by TRCA's Education Team)



BLACK CREEK PIONEER VILLAGE

www.blackcreek.ca

Bring lessons to life, nurture curiosity, and help develop a love of learning with a class trip to a living example of a typical 1800s Ontario crossroads community. Black Creek Pioneer Village provides unique and interactive experiences for your students.

SENSORY ADVENTURES Pre-school to Grade 1

Use your five senses to explore the Village. Meet farm animals, smell the baking bread and herbs from the garden, and card wool. Finally, enjoy a tasty treat at the Inn.



Duration: **Half day (1.75 hours)**

Available: **May to mid-November**

CHRISTMAS PAST Pre-school to Grade 8

Traditions and celebrations of the different cultures that make up the Village provide a very special Christmas visit. Engage in a variety of unique activities in homes and trade shops. All participants create their own Christmas decoration to bring home.



Duration: **Half day (1.75 hours)**

Available: **Mid-November to December**

YESTERDAY'S CHILD Grade 1 to 3

Become a child of long ago! Compare and contrast life then and now by trying on clothing, practicing chores, and playing with traditional toys and games. Discover the various perspectives of different people living in the 19th century, while visiting the many trades shops and houses in our village!



Duration: **Half day (1.75 hours)**

Available: **May to mid-November**

BACK TO SCHOOL Grade 2 to 8

Spend a half day as a student in our 1860s school house. Will you be the son of a blacksmith, daughter of a miller, or a child of a farm laborer? Write on a slate, participate in a spelling bee, play 19th-century games, and practice the 3Rs. Spend the second half of the day exploring select heritage buildings in the Village!



Duration: **Full day (3.5 hours)**

Available: **Year-round**



MANY HANDS Grade 2 to 6

Get to work in an authentic heritage log house! Cook on a real wood stove, churn and prepare butter, card wool, and learn to use a spinning wheel. In our workshop, weave on a barn loom, engage in wood working, explore various tools, and then enjoy a snack made with “many hands”. Spend the second half of the day exploring select buildings in the historic village.



Duration: **Half day (1.75 hours) or full day (3.5 hours)**

Available: **Year-round**

FARM LIFE Grade 2 to 8

Experience the life of a 19th-century farmer in this fully interactive program. Grind grain in a quern, try your hand at threshing and winnowing, plant seeds to take home, and investigate and examine real food preparation artifacts from the 1800s. End the day with a taste of fresh bread and butter from our very own Black Creek bake oven.



Duration: **Half day (1.75 hours)**

Available: **May to mid-November**

CLASS of '67 Grade 6 and 8

How can you make history? Take on a persona and make life choices for your character as “you” grow into adulthood. In this “choose-your-own-ending” game brought to life, students immerse themselves in activities and travel through the village making choices based on real life issues faced by young people in the mid-19th century. As they come to see that the choices they make today impact the future, *Class of '67* empowers youth to understand that they can make history too!



Duration: **Half day (1.75 hours)**

Available: **May to December**

1837 REBELLION Grade 7

Take sides in the 1837 Rebellion to decide the future of your country! Meet characters from the time period and discover the main social and political issues that led to rebellion. Gather your facts and analyze information to prepare for a lively Town Hall debate!



Duration: **Half day (1.75 hours)**

Available: **May to mid-November**



Additional programs including secondary-level programming can be found at www.blackcreek.ca



KORTRIGHT CENTRE FOR CONSERVATION

www.kortright.org

At Kortright Centre for Conservation students are immersed in a natural setting and provided an opportunity to learn, hands-on, about sustainable living, stewardship, and the environment. Curriculum-linked programs build on in-class learning and invite students to connect with nature and better understand their relationship with, and responsibility to, the natural world around them.

MAPLE SYRUP Pre-school to Grade 8

Enjoy the sweetness of springtime in Ontario! Come experience historic and modern methods of making maple syrup. Learn how to identify maple trees and see how they are tapped for sap. Students complete their visit with a taste of the sweet, end result.



Duration: **Half day (2 hours)**

Available: **March to early April**

INSECTS Kindergarten to Grade 6

Students learn basic insect identification and classification skills appropriate to their grade level and then take to the field with bug-catchers in hand to collect different living organisms, exploring at least two different habitats. Students compare their findings, examine the importance of invertebrates, and learn about the fascinating life cycles of this important group of organisms.



Duration: **Half day (2 hours)**

Available: **April to November**

GROWTH AND CHANGE IN ANIMALS Grade 2

This hands-on program provides learners with an introduction to a variety of animals and their distinct characteristics. With the help of skins, antlers, feathers, and additional natural items, students investigate the similarities and differences between mammals, birds, reptiles, amphibians, and fish. They also have an opportunity to observe and explore animal life in several habitats around the Kortright property.



Duration: **Half day (2 hours)**

Available: **Year-round**

ART IN NATURE Grade 2 to 8

Students explore ephemeral art by working in groups to create a masterpiece using the natural materials provided by the landscape. Learners begin with a review of the basic elements of design—colour, texture, line, shape, form, and space—to help guide their installation. A scenic location provides the backdrop for Kortright’s “gallery without walls”, where an appreciation of art and an understanding of the natural environment is fostered.



Duration: **Half day (2 hours)**

Available: **Year-round**

FORCES CAUSING MOVEMENT AND KITE FLYING Grade 3

Students learn to identify the forces of gravity, magnetism, electrostatic force, wind, tension, and friction through hands-on activities and experiments in this introduction to the Forces Causing Movement program. Using investigative techniques, students are challenged to determine the effects of changing the amount of force applied to an object and observe natural forces in action. Extend this program to include making and flying kites!



Duration: **Half day (2 hours)**

Available: **April to October**

HABITATS AND COMMUNITIES Grade 4

From forests and streams to wetlands and meadows, Kortright Centre boasts a rich variety of habitats for students to experience first-hand. Learners will identify producers, consumers, and decomposers that form the communities in these areas and explore the natural environment that these species call home. The human dimension is considered in a discussion on the effects of human activities on resident plants and animals.



Duration: **Half day (2 hours)**

Available: **Year-round**

CONSERVATION OF ENERGY AND RESOURCES Grade 5

Kortright offers students a unique opportunity to observe and understand sustainable technology through renewable energy demonstrations. A hike along our Innovation Trail displays practical, everyday, alternative energy sources. An appreciation of conservation is developed through hands-on exercises, challenging students to produce the energy generated by solar panels and wind turbines, through the use of a bike or hand pump.



Duration: **Half day (2 hours)**

Available: **Year-round**

WATER SYSTEMS Grade 7 and 8

Students examine both man-made and natural water systems at Kortright to increase their understanding that water is crucial to life and a valuable resource that needs to be managed sustainably. Activities include dipping for aquatic invertebrates and water quality testing that can reveal the health of the environment, and studying the water conservation measures currently employed at the Centre.



Duration: **Half day (2 hours)**

Available: **April to November**



Additional programs including secondary-level programming can be found at www.kortright.org/education



TOMMY THOMPSON PARK

www.tommythompsonpark.ca

Minutes from downtown Toronto, unique opportunities abound for your students at Tommy Thompson Park. Wildflower meadows, cottonwood forests, and coastal marshes are just some of the habitats students will explore on their field trip to this urban wilderness. Experience the phenomenon of bird migration and gain an appreciation for the wildlife living in our cities.

ANIMAL DETECTIVES Grade 2 and 3

Become an Animal Detective as you explore Tommy Thompson Park's trails looking for animal clues.



Duration: **Half day (2.5 hours)**

Available: **Mid-April to October**

WETLANDS: SOAK IT UP Grade 2 to 8

Soak up the wonder of wetlands by immersing your class in an incredible story of habitat restoration. Students experience wetlands first-hand while learning about nature's own filter.



Duration: **Half day (2.5 hours)**

Available: **May to October**

CITY LIFE, WILDLIFE Grade 4 to 6

Get to know the urban wildlife living in Toronto's backyard, on an interactive hike that includes a habitat investigation, a close look at invasive species, and a reflection on the impacts of human activity in natural spaces.



Duration: **Half day (2.5 hours)**

Available: **Mid-April to October**

POLLINATION INVESTIGATION Grade 4 to 6

We need pollinators more than they need us! You'll learn why and have the opportunity to investigate the lives and habitats of insect pollinators. Tommy Thompson Park's meadows are rich with tiny wildlife for you to discover!



Duration: **Half day (2.5 hours)**

Available: **Mid-May to October**

WINGED MIGRATION Grade 4 to 7

Hone your observation and data collection skills by becoming immersed in the natural phenomenon of bird migration. Learn more about the migratory species of Tommy Thompson Park and what we can do to protect them.



Duration: **Half day (2.5 hours), a.m. only**

Available: **Mid-April to October**

Additional programs including secondary-level programming can be found at www.tommythompsonpark.ca/education



IN-CLASS VISITS

www.trca.ca/in-class-visits

Let us bring nature education to you! Our passionate, knowledgeable instructors and Ontario Certified Teachers (OCT), come prepared with all the required tools and materials to deliver relevant, hands-on experiences to students through curriculum-linked programs and community-based action projects. Early registration is recommended, as these in-class programs fill up quickly.

WATERSHED ON WHEELS

Free In-School Programs

KINDER SEASON Kindergarten

Students will have fun playing outdoors while engaging with their natural surroundings!



Duration: **Half day (2 hours)**
Available: **Year-round**

LEAF LINKS Grade 3

Students learn about the important roles that trees play and have the opportunity to use simple identification keys to learn about the characteristics of local plant life and different tree species. Using the trees from your own community or school ground elicits prior knowledge and allows the learning to continue once we leave.



Duration: **Half day (2 hours)**
Available: **Year-round**

WETLAND ECOSYSTEMS Grade 3, 4 and 7

Through a variety of engaging and interactive activities, students learn about the important roles that wetlands play and explore the types of animals and plants living in Ontario's wetlands.



Duration: **Half day (2 hours)**
Available: **Year-round**

INSTINCTS FOR SURVIVAL Grade 4 and 7

Experience life on the wild side! Students assume the role of a native species to simulate predator-prey relationships in an active, outdoor food-web game. This popular game reinforces the concepts of habitats and communities, provision of basic needs, food chains, trophic levels, energy flow and pyramid of numbers. It also looks at human impacts on animal survival.



Duration: **Half day (2 hours)**
Available: **Year-round**

CLIMATE CALAMITY Grade 5 and 7

When it comes to climate change, there is little time to waste. Students learn to separate fact from fiction by playing a greenhouse gas game and learning about human activities that accelerate the Earth's change in climate. Stewardship and what we can do to help is also discussed.



Duration: **Half day (2 hours)**

Available: **Year-round**

Additional programs including secondary-level programming can be found at www.trca.ca/wow

AQUATIC PLANTS PROGRAM

Free Field Trip Program

Grade 3 to 8

Looking for a curriculum-linked, hands-on, nature-based program that is free? Bring your class out to a local wetland and plant with TRCA!

The goal of the program is to increase students' awareness of the value of local ecosystems in maintaining the ecological health of our region by giving students the opportunity to plant in a local wetland or greenspace.

Visit our website to learn more and to register:

www.trca.ca/in-class-visits



BEYOND THE PARK

In-School Programs

WHAT'S THE WORD, URBAN BIRD?*

Grade 1 to 6

Birds are all around us, but how well do you know them? In this program, students will find out just how fascinating our feathered friends are. Focusing on bird species found in Tommy Thompson Park, and elsewhere in Toronto, participants will explore the world of birds through sight and sound, discovering what makes them unique!

**Offered in Toronto only*



Duration: **Half day (2 hours)**

Available: **Year-round**

WETLANDS MATTER

Grade 1 to 6

Why are wetland habitats in the GTA so important? Through games and activities, participants will learn what a wetland is, why it matters, and how we can be part of wetland conservation. Let's discover the world of wetlands together!



Duration: **Half day (2 hours)**

Available: **Year-round**

NATURE IN THE CITY

Grade 1 to 6

Learn about the amazing wildlife that calls the Greater Toronto Area home! Participants' understanding of local urban wildlife will grow through activities, games, and opportunities to explore fur and skull replica specimens. Emphasis will be placed on the concept of sharing city spaces with wildlife and ensuring their needs are met alongside ours.



Duration: **Half day (2 hours)**

Available: **Year-round**

Additional programs including secondary-level programming can be found at
www.trca.ca/in-class-visits

GET OUTSIDE

**with Toronto and Region Conservation
Authority (TRCA) Camps!**

Summer Day Camps

Winter Camps

March Break Camps

Overnight Camps

Leader In Training Camps

**Nature Camps right in the GTA
with 7 locations to choose from**



trca.ca/camps



Calling all **SCOUTS, GUIDES, CAMPS, TEAMS** and **SCHOOL RETREATS!**

Give your group an unforgettable experience!

Reconnect with one another and nature, earn badges, and gain experiences to last a lifetime! Enjoy the great outdoors at our education centres while we take care of the details. Weekend programming to suit any groups' needs, objectives or focus is available at the following locations:

Albion Hills Field Centre (Caledon), **Claremont Nature Centre** (Pickering), and **Lake St. George Field Centre** (Richmond Hill)

Call Toronto and Region Conservation Authority at 416-667-6295 or visit www.trca.ca/weekends

DUFFERIN

SIMCOE

TRCA EDUCATION CENTRES

Glen Haffy
Conservation Area

Albion Hills Field Centre
and Conservation Park
p. 26–29

KING

YORK

CALEDON

PEEL

Kortright Centre
for Conservation
p. 10–13

400

VAUGHAN

Boyd
Conservation Park

7

407

Heart Lake
Conservation Park

BRAMPTON

410

10

QUEEN ST S

407

Black Creek
Pioneer Village
p. 6–9

401

IN-CLASS VISITS

Through our mobile **Watershed on Wheels** and **Beyond the Park** programs, we bring nature education to your school. See pages 16–19 for more details.

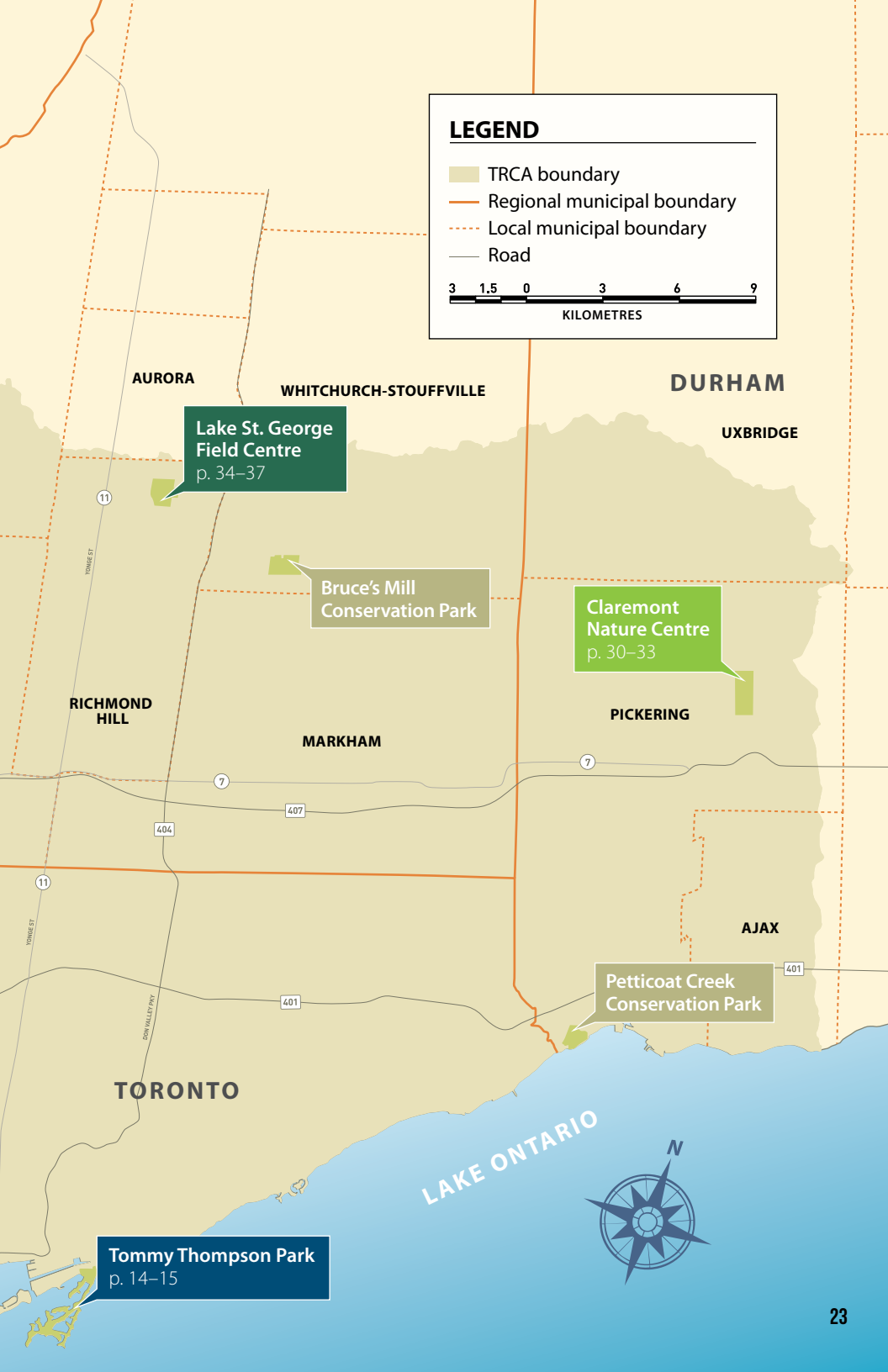
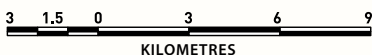


HALTON

MISSISSAUGA

LEGEND

- TRCA boundary
- Regional municipal boundary
- Local municipal boundary
- Road



AURORA

WHITCHURCH-STOUFFVILLE

DURHAM

UXBRIDGE

Lake St. George
Field Centre
p. 34-37

Bruce's Mill
Conservation Park

Claremont
Nature Centre
p. 30-33

RICHMOND
HILL

PICKERING

MARKHAM

AJAX

TORONTO

Petticoat Creek
Conservation Park

Tommy Thompson Park
p. 14-15

LAKE ONTARIO





OVERNIGHT PROGRAMS

TRCA's educational overnight programming offers an exciting and distinctive opportunity for students to learn and grow, both as individuals and as a member of the class. With access to unique environmental and geographic resources such as forest and wetlands as well as endless hiking and skiing trails, students are provided with the backdrop to build confidence, develop leadership skills and bond with one another. All excursions are curriculum-linked, customized to your group's specific needs, and delivered by our passionate and knowledgeable Ontario Certified Teachers (OCT).

Overnight field trips are available at:

Albion Hills Field Centre (Caledon), **Claremont Nature Centre** (Pickering), and **Lake St. George Field Centre** (Richmond Hill)



ALBION HILLS FIELD CENTRE

www.trca.ca/ahfc

Albion Hills Field Centre is a beautiful, spacious overnight education centre located in the rolling hills of Caledon. Delicious food, comfortable accommodations and an inspiring landscape are the backdrop for a fun and engaging outdoor education experience. Hiking, cross-country skiing, mountain biking, and being outside in nature will make memories to last a lifetime. Albion Hills' immersive overnight field trips are curriculum-based and taught by Ontario Certified Teachers (OCT). Trips are customizable to the needs of you and your students.

BIKE THE HILLS Grade 4 to 8

Take your students on an adventurous trail-biking program on Albion's fleet of fat-tire mountain bikes. This inclusive learning program will teach kids the basics of bike riding, trail etiquette and bike maintenance. Students will do a bike rodeo to assess their skills and Albion's expert staff will match the rider to the trail. The program is suited to all ability levels.



Duration: **Half day (2 hours)**

Available: **Year-round**

COUREURS DE BOIS: THE FUR TRADING GAME Grade 4 to 8

Relive an important part of Canadian history. This simulation game immerses students in the lifestyle of the "Runners of the Woods", the early French settlers who paddled their canoes through Canadian waterways trading goods with First Nations for furs. Students will practice math skills as they barter for goods and learn orienteering with a map and compass.



Duration: **Half day (2 hours)**

Available: **Year-round**

INSTINCTS FOR SURVIVAL Grade 4 to 8

Experience life on the wild side! Students will assume the role of a native species while fighting to maintain a place on the food chain. This predator-prey simulation teaches students about relationships within the food web and also looks at human impact on animal survival. Students will have fun in nature while they play this active, outdoor adventure game.



Duration: **Half day (2 hours)**

Available: **Year-round**

NATURE ART Grade 4 to 8

Awaken the creativity within by using different artistic techniques inspired by nature. Students enjoy a short hike, observing the natural landscape through the eyes of an artist. Solar prints, sketching, watercolour painting and creative writing will capture each student's unique artistic impression of Albion Hills.



Duration: **Half day (2 hours)**

Available: **Year-round**



ORIENTEERING Grade 4 to 8

Choose from two different orienteering programs. In Photo Orienteering, students work cooperatively in pairs to analyze a series of photographs, determining the location of the photographer, using accurate compass skills and deductive reasoning. Score Orienteering also involves teamwork; students are challenged to become experts in map interpretation and navigation by using a compass to find a series of hidden targets.



Duration: **Half day (2 hours)**

Available: **Year-round**

STREAM STUDY Grade 4 to 8

Students will investigate Centreville Stream, a tributary to the Humber River, and observe, measure, experiment with, and collect, biophysical data. An emphasis will be placed on exploring and identifying biodiversity using classification tools. Students analyze their findings to determine if the stream ecosystem is healthy and biologically diverse. Connections are made between the stream and other systems.



Duration: **Half day (2 hours)**

Available: **April to October**

WILDERNESS SURVIVAL SKILLS Grade 4 to 8

Survivor Albion! Working as a cooperative team in this simulation activity, students are challenged to engineer a shelter constructed from natural materials, build a small cooking fire to make hot chocolate, and signal for help. Safety and a no-trace philosophy are emphasized in this program.



Duration: **Half day (2 hours)**

Available: **Year-round**

GROUP DYNAMICS Grade 5 to 8

Students work in teams to solve a variety of active challenges in our low ropes course. Success depends on a combination of communication, cooperation, and teamwork. The program teaches collaboration skills and is designed to instill self-confidence and build trust and respect amongst team members.



Duration: **Half day (2 hours)**

Available: **Year-round**



Additional programs including secondary-level programming can be found at
www.trca.ca/ahfc



CLAREMONT NATURE CENTRE

www.trca.ca/cnc

Located just north of Toronto, Claremont Nature Centre is a cedar log building with a wood-burning fireplace that provides a cozy backdrop for your overnight, educational experiences. Our Ontario Certified Teachers (OCT) will share their passion with your students as they are immersed in engaging, environmental programming!

INDIGENOUS STUDIES Grade 3 to 8

Students will first learn about the history of local First Nation's through discussions and an examination of actual artifacts. Hands-on activities like participating in historic games of skill, using a fire bow, pounding corn, and baking Bannock help bring the history of the culture and people to life.



Duration: **Half day (2.5 hours)**

Available: **Year-round**

CROSS-COUNTRY SKIING Grade 4 to 8

After a a group lesson on basic techniques and safety considerations, explore the trails of Claremont with a Nordic twist! Skis, boots and poles are provided. A ski tour of the property will follow to allow time for students to hone their skills.



Duration: **Half day (2.5 hours)**

Available: **Winter**

GEOCACHING Grade 4 to 8

Students will use handheld GPS units to find geocache sites throughout the property. Review of basic screen navigation, waypoint input and following the compass screen will be completed before the teams leave "home base". May the best team win!



Duration: **Half day (2.5 hours)**

Available: **Year-round**

INSTINCTS FOR SURVIVAL Grade 4 to 8

Experience life on the wild side! Students will assume the role of an indigenous species while fighting to maintain a place on the food chain. This predator-prey simulation teaches students about relationships within the food web and also looks at the human impact on animal survival, through an active, outdoor adventure game.



Duration: **Half day (2.5 hours)**

Available: **March through September**

POND STUDY Grade 4 to 8

Ever wonder what lurks beneath the surface of local ponds? Students will explore the unknown by becoming acquainted with the characteristics of healthy pond ecosystems. Collecting and identifying pond organisms illustrates how these animals have adapted to their ecological habitat.



Duration: **Half day (2 hours)**

Available: **Spring, Summer, Fall**

STREAM STUDY Grade 4 to 8

An investigation of a local stream provides students with the opportunity to observe, measure, experiment, and collect biological and physical data. After interpreting the results, the young scientists will then determine if the stream ecosystem is healthy and biologically diverse.



Duration: **Half day (2.5 hours)**

Available: **Spring, Summer, Fall**





WILDERNESS SURVIVAL SKILLS Grade 4 to 8

Working as a cooperative team in this simulation activity, students are challenged to engineer a shelter constructed from natural materials, build a small cooking fire to make hot chocolate, and signal for help. Safety and a no-trace philosophy are emphasized in this program.



Duration: **Half day (2.5 hours)**

Available: **Year-round**

TREASURE MAPPING Grade 6 to 8

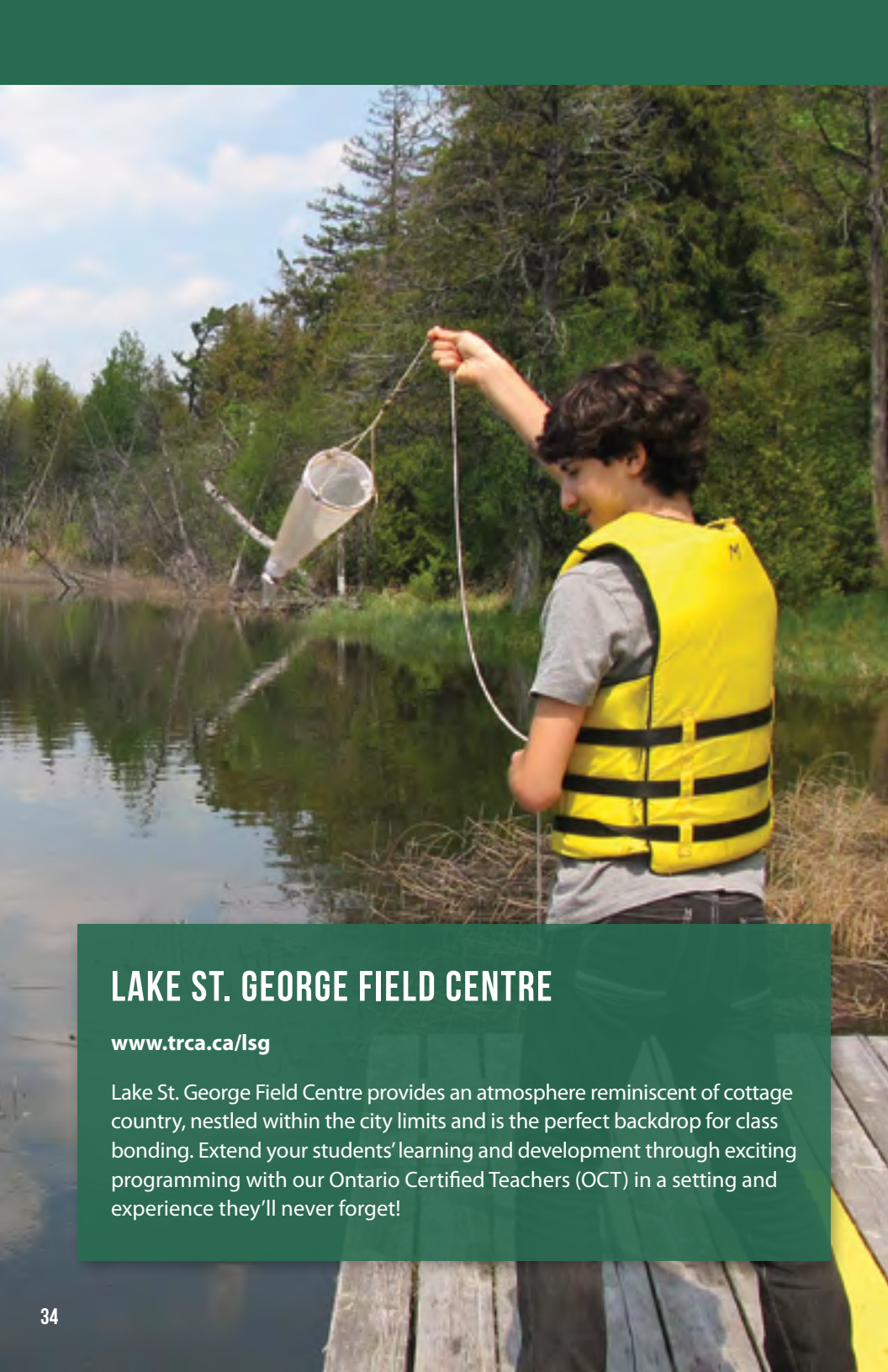
'X' marks the spot! This activity introduces students to mapping. Participants are equipped with all of the necessary supplies to create a map and hide a treasure. Paces and bearings are used to develop a route, and clues are left as to the location of the treasure.



Duration: **Half day (2 hours)**

Available: **Year-round**

Additional programs including secondary-level programming can be found at www.trca.ca/cnc



LAKE ST. GEORGE FIELD CENTRE

www.trca.ca/lsg

Lake St. George Field Centre provides an atmosphere reminiscent of cottage country, nestled within the city limits and is the perfect backdrop for class bonding. Extend your students' learning and development through exciting programming with our Ontario Certified Teachers (OCT) in a setting and experience they'll never forget!

CROSS-COUNTRY SKIING Grade 4 to 8

After a group lesson on basic techniques and safety considerations, explore the trails of Lake St. George with a Nordic twist! Skis, boots and poles are provided. A ski tour of the property will follow to allow time for students to hone their skills.



Duration: **Half day (2.5 hours)**

Available: **Winter**

COUREURS DE BOIS: THE FUR TRADING GAME Grade 4 to 8

Relive an important part of Canadian history. This simulation game immerses students in the lifestyle of the “Runners of the Woods”, the early French settlers who paddled their canoes through Canadian waterways trading goods with First Nations for furs. Students will practice math skills as they barter for goods and learn orienteering with a map and compass.



Duration: **Half day (2.5 hours)**

Available: **Year-round**

FISH MANAGEMENT Grade 4 to 8

What varieties of fish species swim in Lake St. George? Students will answer that question by conducting an experiment that begins with a fishing expedition using our 80m seine net. They will identify fish using identification keys and create drawings of the different species. Students will also be encouraged to weigh and measure the length of the fish before employing methods of “gentle release” back into the water. *All waterfront programs have NLS certified and experienced staff present.*



Duration: **Half day (2.5 hours)**

Available: **Spring, Summer, Fall**

INSTINCTS FOR SURVIVAL Grade 4 to 8

Experience life on the wild side! Students will assume the role of an indigenous species while fighting to maintain a place on the food chain. This predator-prey simulation teaches students about relationships within the food web and also looks at the human impact on animal survival, through an active, outdoor adventure game.



Duration: **Half day (2.5 hours)**

Available: **Year-round**

LAKE ECOLOGY Grade 4 to 8

Take a ride on our solar-powered pontoon boat! Students have the unique opportunity to learn about glacial kettle lakes while enjoying a boat ride on Lake St. George. Participants will record data that allows them to create a profile of the lake. They will also be introduced to water sampling, perform chemical tests on water samples, and graph and interpret the results. *All waterfront programs have NLS certified and experienced staff present.*



Duration: **Half day (2.5 hours)**

Available: **Spring, Summer, Fall**





NIGHT HIKE Grade 4 to 8

Explore the Lake St. George property under the cover of darkness, while engaging all the senses, to develop an appreciation for the specialization of the nocturnal world. With consideration given to theme, weather, and time, possible activities include owl calling, moon mints, chalk sketching, storytelling, and astronomy investigations.



Duration: **Evening program (1.5 hours)**

Available: **Year-round**

WILDERNESS SURVIVAL SKILLS Grade 4 to 8

Working as a cooperative team in this simulation activity, students are challenged to engineer a shelter constructed from natural materials, build a small cooking fire to make hot chocolate, and signal for help. Safety and a no-trace philosophy are emphasized in this program.



Duration: **Half day (2.5 hours)**

Available: **Year-round**

INTRODUCTION TO GPS TECHNOLOGY Grade 7 and 8

Students will learn how this technology works and relates to topographic maps. They will gain experience with the UTM (Universal Transverse Mercator) system using a handheld GPS unit and will be challenged to successfully navigate to various checkpoints in an orienteering exercise.



Duration: **Half day (2.5 hours)**

Available: **Year-round**

Additional programs including secondary-level programming can be found at www.trca.ca/lsg



TEACHER RESOURCES

Field trip planning made easy!

USE IT! The **sample itinerary** on page 40 can give you an idea of how to maximize your field trip experience. The **regional map** on pages 22–23 can outline which TRCA facility is most convenient for you!

CHOOSE IT! You will find grade and curriculum links listed next to each program. When multiple grades are listed, this indicates that the program will be adapted to fit the specific needs and curriculum of your classroom. This guide presents only a sample of our most popular programs. Additional programming is available for all sites at www.trca.ca/learning.

PLAN IT! Consult with your school calendar and use the planning tips on the following pages to help structure, organize and customize your field trip.

BOOK IT! Reach us at any of the points listed here to confirm your field trip!

PHONE: **416-667-6295** (*Monday–Friday, 8:30am–4:30pm*)

EMAIL: vservices@trca.ca

WEB: www.trca.ca/learning

HELPFUL HINTS

- **Inclusivity and equity are integral.** Education Centres can accommodate students with mobility concerns. Share your needs with us!
- Payments can be a hassle, but with TRCA you control the process (payments, collections, payment plans etc.) and **only two simple payments are required: deposit and balance.**
- Invite another class, or even another grade, to **help reduce the per student cost of expenses like transportation.** Visitor Services can assist you with booking different programs for each class or grade.



NOTES

SAMPLE OVERNIGHT TRIP ITINERARY

Grade(s): 7

of students: 40

DAY 1	ARRIVE	
	MORNING PROGRAM	Check-in and meet centre staff
	LUNCH	
	AFTERNOON PROGRAM	Team Building and Low Ropes
	DINNER	
	EVENING PROGRAM	Night Hike or Owl Prowl

DAY 2	BREAKFAST	
	MORNING PROGRAM	Cross-Country Skiing
	LUNCH	
	AFTERNOON PROGRAM	Wilderness Survival Skills
	DINNER	
	EVENING PROGRAM	Evening Hike

DAY 3	BREAKFAST	
	MORNING PROGRAM	Introduction to GPS Technology
	DEPART (if 3-day trip) or LUNCH (if 5-day trip)	
	AFTERNOON PROGRAM	Instincts for Survival
	DINNER	
	EVENING PROGRAM	Astronomy

DAY 4	BREAKFAST	
	MORNING PROGRAM	Eco-footprint
	LUNCH	
	AFTERNOON PROGRAM	Orienteering
	DINNER	
	EVENING PROGRAM	Scavenger Hunt and Campfire

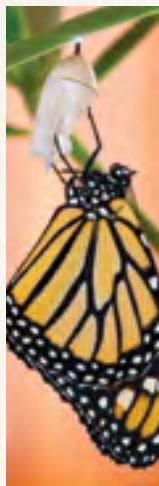
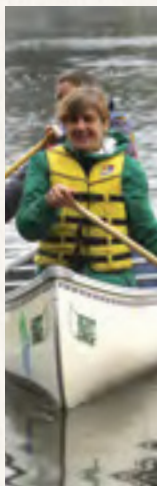
DAY 5	BREAKFAST	
	MORNING PROGRAM	Nature Art or Nature Photography
	LUNCH DEPART	

OVERNIGHT TRIP PLANNING CHECKLIST

-
- ☐ Call Visitor Services at 416-667-6295 to book your trip.
-
- ☐ Coordinate trip with school administrators and book your transportation.
-
- ☐ Make deposits with TRCA to secure preferred trip dates.
-
- ☐ The Education Site Supervisor will contact you regarding student forms and to review and select your program itinerary.
-
- Communicate with Parents:
- Price
 - ☐ • Date(s)
 - Safety/Permission Forms
 - Packing list/ expectations
-
- ☐ Complete health, consent, dietary, and dorm assignment forms and send to Education Site Supervisor.
-
- ☐ Confirm participant numbers with TRCA.
After your trip you will be invoiced for final payment.
-

ENJOY YOUR TRIP!

NOTES



ELEMENTARY TEACHER PROFESSIONAL DEVELOPMENT

Expand your teaching toolkit with TRCA's nature-based professional development opportunities. Our courses build skills and knowledge through experiential learning and proven teaching methods.


Offerings include:

- Voices from the Land: Art and Culture in Nature
- Teaching and Learning with Monarch Butterflies
- Creating Monarch Habitats
- Global Positioning Systems (GPS) Certification
- Introduction to Safe Paddling - Ontario Recreational Canoeing and Kayaking Association (ORCKA) Course

Full-day or half-day workshops are offered at fully equipped educational facilities. Certification and/or licencing are available in appropriate areas, upon completion.

For information on programs, dates and locations, visit:
www.trca.ca/learning/adult

Monarch Nation

Supporting Species at Risk 

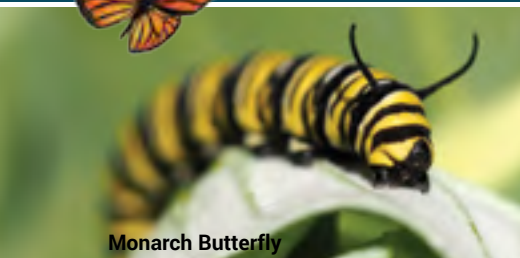


Looking for resources and meaningful ways to teach about Species at Risk in Canada?

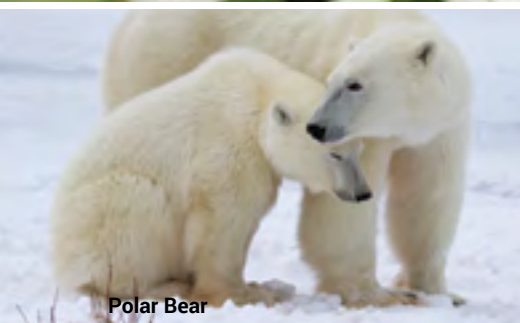
Monarch Nation is a national program that engages and educates children about species at risk and empowers them to take action on behalf of wildlife in Canada.

Post about your action projects on our website and join the growing movement across Canada to help our Species at Risk.

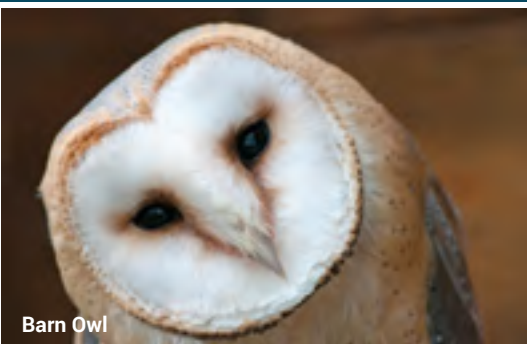
monarchnation.ca



Monarch Butterfly



Polar Bear



Barn Owl



Western Chorus Frog

This project was undertaken with the financial support of:
Ce projet a été réalisé avec l'appui financier de :



Environment and
Climate Change Canada

Environnement et
Changement climatique Canada

Project of:



Toronto and Region
Conservation
Authority

OUR EDUCATION CENTRES

Day Programs

Black Creek Pioneer Village - Toronto, Ontario

Kortright Centre for Conservation - Vaughan, Ontario

Tommy Thompson Park - Toronto, Ontario

Overnight Programs

Albion Hills Field Centre - Caledon, Ontario

Claremont Nature Centre - Pickering, Ontario

Lake St. George Field Centre - Richmond Hill, Ontario

In-Class Visits

Watershed on Wheels - Your School

Beyond The Park - Your School

HOW TO REACH US FOR INQUIRIES, BOOKINGS AND MORE INFORMATION

PHONE: **416-667-6295**

Monday–Friday, 8:30am–4:30pm

EMAIL: **vservices@trca.ca**

WEB: **www.trca.ca/learning**