

WATERSHED *moments*




LOCATION:
Oak Ridges Community Centre, Humber Watershed

DATE:
Tuesday May 7, 2019

REGION/MUNICIPALITY:
York Region, City of Richmond Hill

IN COLLABORATION WITH:
Toronto and Region Conservation Authority (TRCA),
City of Richmond Hill, Lake Wilcox Public School



Oak Ridges Community Centre Community-Based Restoration, Lake Wilcox Public School

A very enthusiastic group of Lake Wilcox PS students attended Oak Ridges Community Centre to participate in a community-based restoration and invasive species control activity.

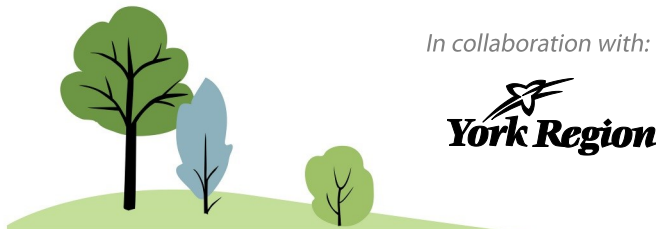
TRCA staff provided a safety talk, planting demonstration and 85 students got busy to plant 50 native shrubs, placing a mulch mat and mulch around each piece. The students also removed approximately 50 invasive buckthorn plants which outcompete native vegetation. These control methods will allow the native shrubs to thrive, providing habitat for local native wildlife.

Students also took part in citizen science activities as part of TRCA's Young Tree and Shrub Monitoring and Maintenance Program (YTMP). Through YTMP, a percentage of plant material is tagged with an identification number and baseline measurements and general observation are recorded. Maintenance strategies are put in place and additional information is collected over a period of three to five years tracking impacts of storm events, insect infestation, disease and wildlife browse to determine plant success.

These activities provide a better understanding of greenspace, the area's value as wildlife habitat, and the importance of maintaining these areas through ongoing maintenance activities.

Positive Environmental Impacts

| Vegetation Planted | # of Pieces Planted | Total Area Enhanced (sq.m.) | Invasive Plants Removed | # of Participants | Participant Hrs Contributed |
|--------------------|---------------------|-----------------------------|-------------------------|-------------------|-----------------------------|
| Shrubs | 50 | 75 | 50 | 85 | 275 |
| Total | 50 | 75 | 50 | 85 | 275 |



In collaboration with:

