

# Wonderful Watershed Moments!

MAY 2018

## Clean Water—Our Future Inaugural Shoreline Cleanup at East Point Park



**LOCATION:**  
East Point Park, Lake Ontario Waterfront

**DATE:**  
Tuesday May 8, 2018

**REGION/MUNICIPALITY:**  
City Of Toronto

**PARTNERS:**  
Toronto and Region Conservation Authority, The Living City Foundation, Greater Toronto Sewer and Watermain Contractors Association



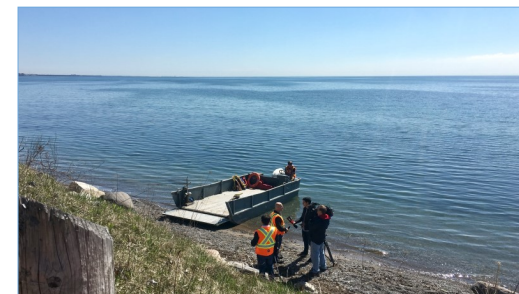
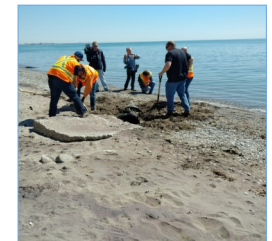
The Living City Foundation, Toronto and Region Conservation Authority (TRCA) and the Greater Toronto Sewer and Watermain Contractors Association (GTSWCA), teamed up to host 'Clean Water—Our Future', a shoreline cleanup activity. This was the inaugural shoreline clean-up event for this partnership.

The 'Clean Water—Our Future' shoreline cleanup provides a unique opportunity to collect and remove litter and debris from areas along East Point Park shoreline that are difficult to access.

The day started off with a short warm-up and stretching routine followed by a safety talk to prepare the participants for the activity. Equipped with shovels, pick axes and rope, members of the GTSWCA worked diligently to collect 6 large bags of litter weighing over 80 pounds and excavated a car chassis, an engine block, scrap metal and 5 tires. A utility vehicle and small barge were on hand to remove collected debris from the shoreline.

Removing litter and garbage from waterways and natural areas is important due to negative impacts to water quality which affect both wildlife and human health. Plastics persist and do not fully break down and if not removed quickly, get smaller over time and become what is known as microplastics. These small pieces of plastic are difficult to collect and are often mistaken as a food to wildlife. When ingested, they can prove to be fatal to both aquatic and terrestrial species.

Removing illegal waste and litter is an important engagement opportunity to improve the overall health and function of our watershed and provide learning opportunities to the importance of disposing garbage properly. It allows community residents a greater understanding and appreciation of natural areas.



### Positive Environmental Impacts

# of Participants	# of Garbage Bags Collected	Total Weight Collected (lbs)	Participant Hrs Contributed
28	6	~ 500	84

