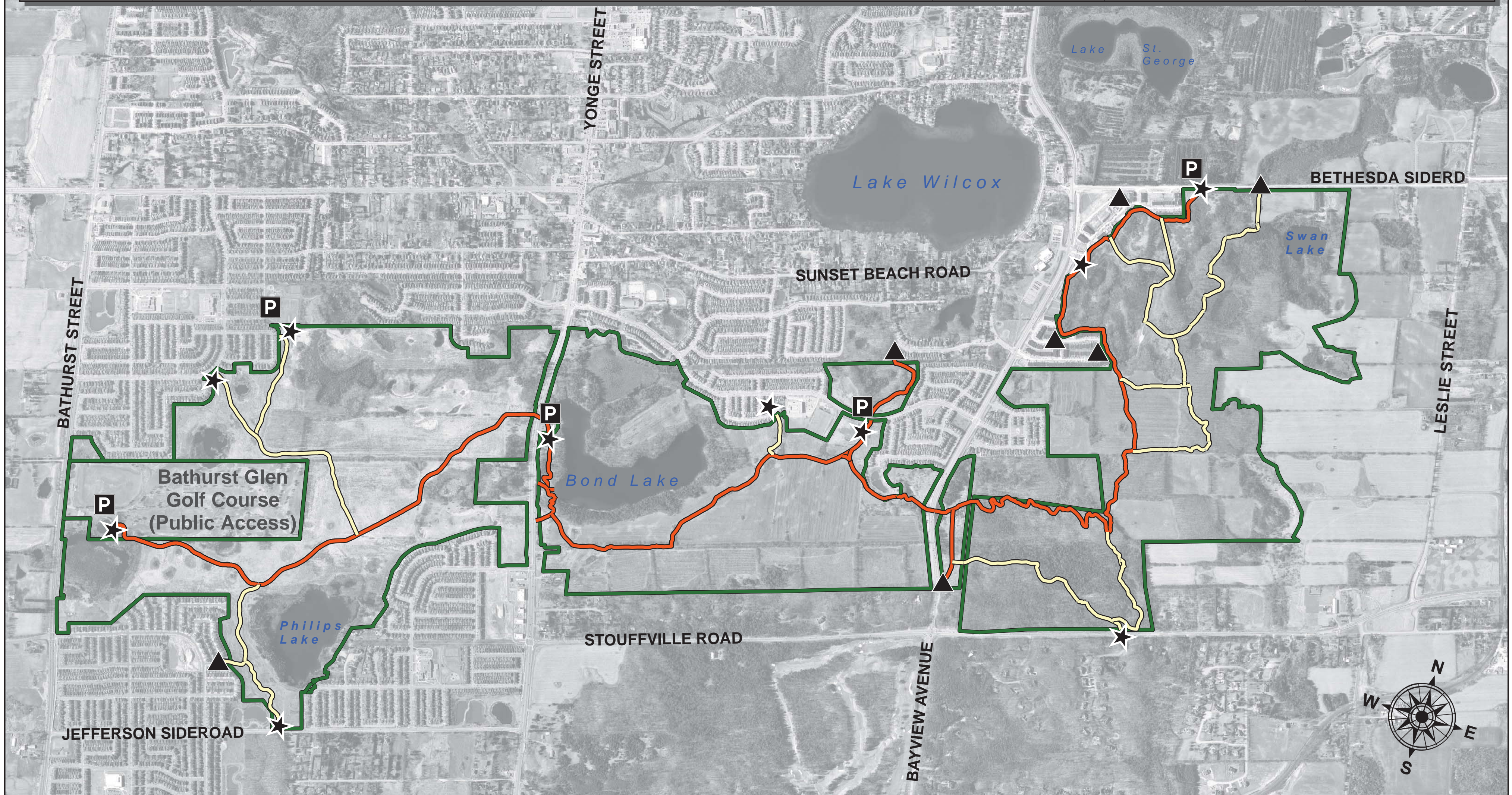



Oak Ridges Corridor Conservation Reserve

TRAIL	LENGTH (KM)	TYPICAL SLOPE (%)	MAXIMUM SLOPE (%)	TYPICAL CROSS SLOPE (%)	MAXIMUM CROSS SLOPE (%)	FIRM SURFACE TYPE (%)	TYPICAL TREAD WIDTH (CM)	TYPICAL SURFACE TYPE
ORCCR (BATHURST TO BAYVIEW - ALL TRAILS)	10.2	3.8	26.6	3.2	15.9	93.1	208	CRUSHED LIME STONE
ORCCR (BAYVIEW TO BETHESDA - PRIMARY MULTI-USE TRAIL ONLY)	3.8	5	24.6	3.1	15.7	100	154.5	CRUSHED LIME STONE



Legend

- Oak Ridges Corridor Conservation Reserve
- P Parking Lot (Not Winter Maintained)
- Trail Access
- Trailhead (Information Kiosk)
- Primary Multi-Use Trail (Oak Ridges Side Trail)
- Side Trail



Toronto and Region
Conservation
for The Living City

Kilometres
0 0.25 0.5 1

Disclaimer:

The Data used to create this map was compiled from a variety of sources & dates. The T.R.C.A. takes no responsibility for errors or omissions in the data and retains the right to make changes & corrections at anytime without notice. Produced by Toronto and Region Conservation Authority under Licence with the Ministry of Natural Resources © Queen's Printer for Ontario. Created By: Information Systems/Information Technology Orthophoto: First Base Solutions Inc., Spring 2015 Date: February 29, 2016